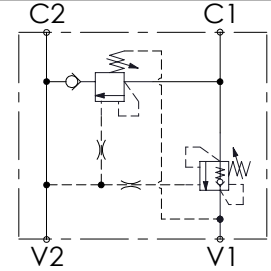
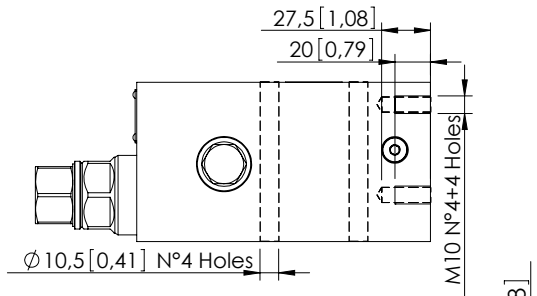


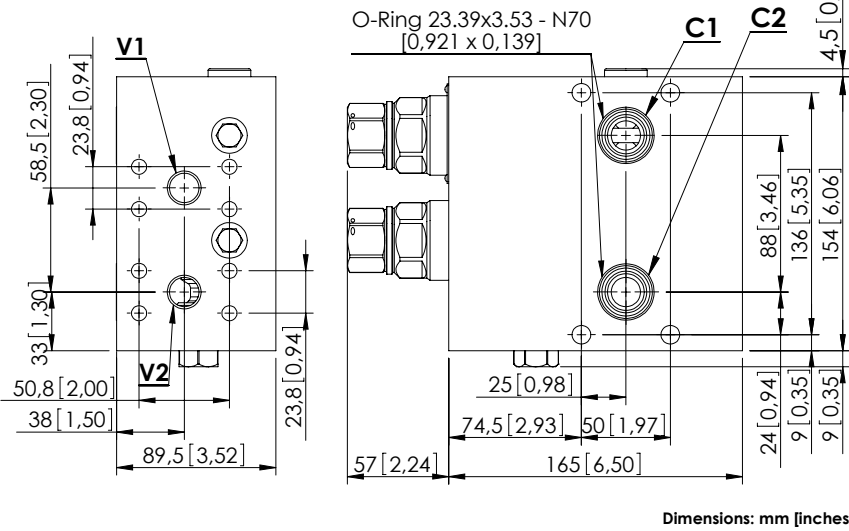
MRSN-300-ABNV

REGENERATIVE



SPECIFICATIONS

Max. operating pressure:	420 bar (6000 psi)
Rated flow:	300 l/min (79 gpm)
Manifold:	Steel
Weight:	16,86 kg (37,17 lbs)
Contamination class to ISO 4406:	See technical spec.
MTTF _a :	150 years

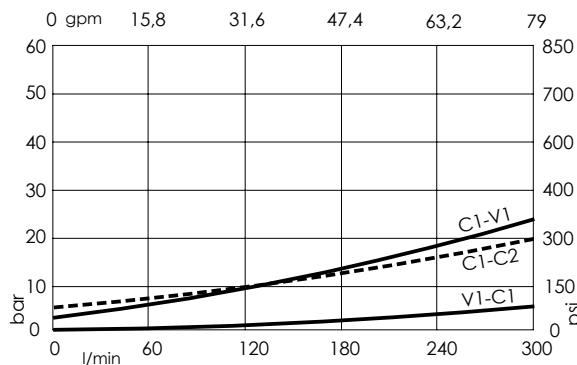


Dimensions: mm [inches]

NOTES

Setting: at least 1.3 times the load induced pressure.
Designed for aerial platforms.

CURVES



ORDERING CODES

Quick code	Description	Pilot ratio	Main ports size	Standard setting Q=5 l/min (1,3 gpm)	Adjustment range	Pressure increase
MB000816	MRSN-300-ABNV-06-S34-N420	6:1	V1,V2: 3/4" SAE 6000 C1,C2: Ø16,5	250 bar (3600 psi)	120-360 bar (1700-3600 psi)	122 bar/turn (1800 psi/turn)