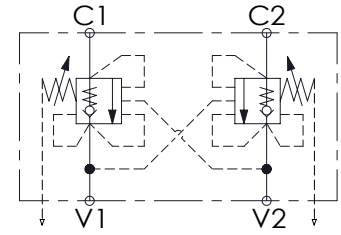
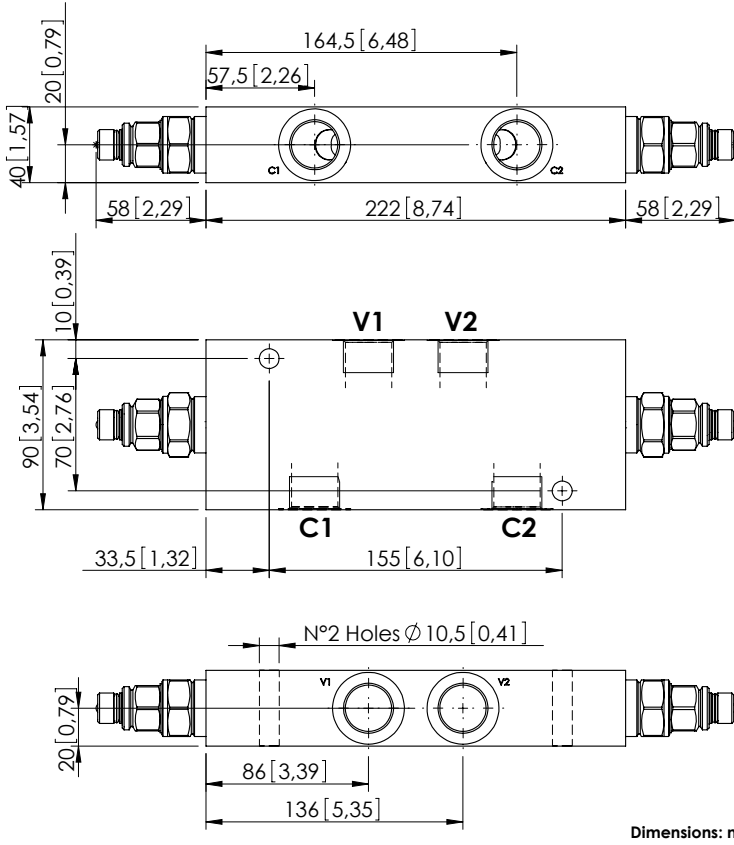


OVERCENTRE VALVE

# MBDP-150-ZLDE

DOUBLE ACTING  
RELIEF COMPENSATED



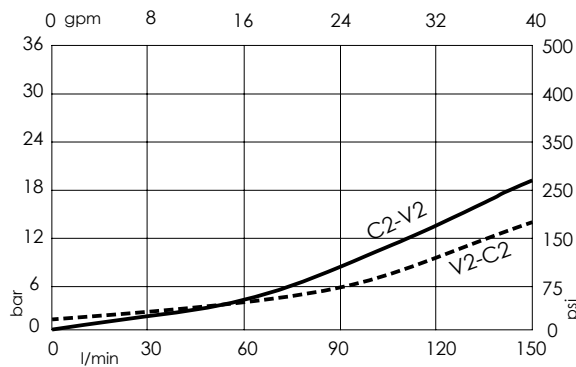
### SPECIFICATIONS

|                                  |  |
|----------------------------------|--|
| Max. operating pressure:         | 350 bar (5000 psi)   |
| Rated flow:                      | 150 l/min (40 gpm)   |
| Weight:                          | Aluminium: 2,5 kg (5,51 lbs)<br>Steel: 5,84 kg (12,88 lbs) |
| Contamination class to ISO 4406: | See technical spec.  |
| MTF <sub>d</sub> :               | 150 years  |

### NOTES

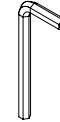
Setting: at least 1.3 times the load induced pressure.

### CURVES



### OPTIONS

Hex key for setting



Ordering code:  
PV000669

### SEALING CAP



Ordering code:  
ST000012

### ORDERING CODES

| Quick code | Description               | Pilot ratio | Manifold material | Main ports size                | Standard setting<br>Q=5 l/min(1,3 gpm) | Adjustment range            | Pressure increase            |
|------------|---------------------------|-------------|-------------------|--------------------------------|--|-----------------------------|------------------------------|
| MB000436   | MBDP-150-ZLDE-04-G34-N350 | 4:1         | Aluminium         | V1, V2: G3/4"<br>C1, C2: G3/4" | 350 bar (5000 psi)                     | 100-350 bar (1400-5000 psi) | 104 bar/turn (1500 psi/turn) |
| MB000437   | MBDP-150-ZLDE-04-G34-N200 | 4:1         | Aluminium         | V1, V2: G3/4"<br>C1, C2: G3/4" | 200 bar (2900 psi)                     | 60-210 bar (850-3000 psi)   | 56 bar/turn (800 psi/turn)   |
| MB000438   | MBDP-150-ALDE-04-G34-N350 | 4:1         | Steel             | V1, V2: G3/4"<br>C1, C2: G3/4" | 350 bar (5000 psi)                     | 100-350 bar (1400-5000 psi) | 82 bar/turn (1200 psi/turn)  |
| MB000439   | MBDP-150-ALDE-04-G34-N200 | 4:1         | Steel             | V1, V2: G3/4"<br>C1, C2: G3/4" | 200 bar (2900 psi)                     | 60-210 bar (850-3000 psi)   | 47 bar/turn (700 psi/turn)   |
| MB000416   | MBDP-150-ZLDE-08-G34-N350 | 8:1         | Aluminium         | V1, V2: G3/4"<br>C1, C2: G3/4" | 350 bar (5000 psi)                     | 100-350 bar (1400-5000 psi) | 104 bar/turn (1500 psi/turn) |
| MB000417   | MBDP-150-ZLDE-08-G34-N200 | 8:1         | Aluminium         | V1, V2: G3/4"<br>C1, C2: G3/4" | 200 bar (2900 psi)                     | 60-210 bar (850-3000 psi)   | 56 bar/turn (800 psi/turn)   |
| MB000422   | MBDP-150-ALDE-08-G34-N350 | 8:1         | Steel             | V1, V2: G3/4"<br>C1, C2: G3/4" | 350 bar (5000 psi)                     | 100-350 bar (1400-5000 psi) | 82 bar/turn (1200 psi/turn)  |
| MB000423   | MBDP-150-ALDE-08-G34-N200 | 8:1         | Steel             | V1, V2: G3/4"<br>C1, C2: G3/4" | 200 bar (2900 psi)                     | 60-210 bar (850-3000 psi)   | 47 bar/turn (700 psi/turn)   |