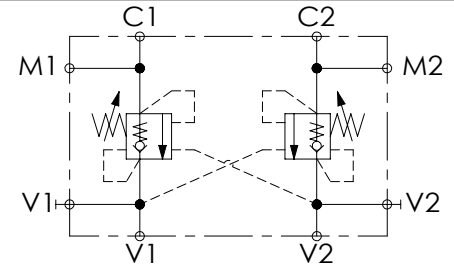
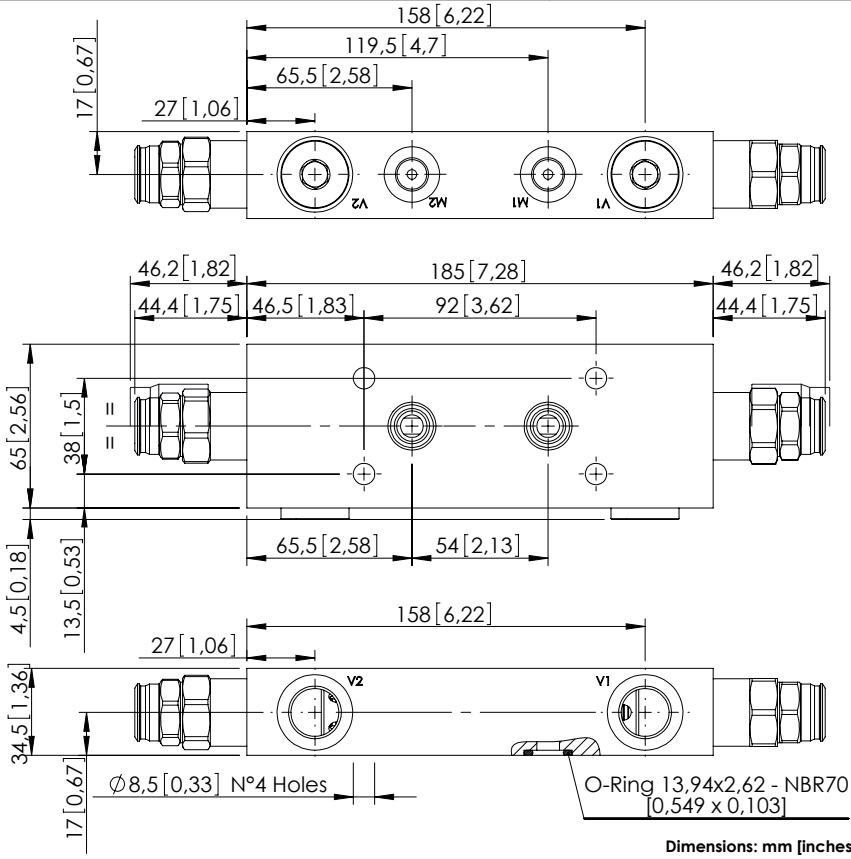


OVERCENTRE VALVE

MBDN-100-ABNR

DOUBLE ACTING
TWO FLANGED PORTS



SPECIFICATIONS

| | |
|----------------------------------|---------------------|
| Max. operating pressure: | 350 bar (5000 psi) |
| Rated flow: | 100 l/min (26 gpm) |
| Manifold: | Steel |
| Weight: | 3,19 kg (7,03 lbs) |
| Contamination class to ISO 4406: | See technical spec. |
| MTF _a : | 150 years |

NOTES

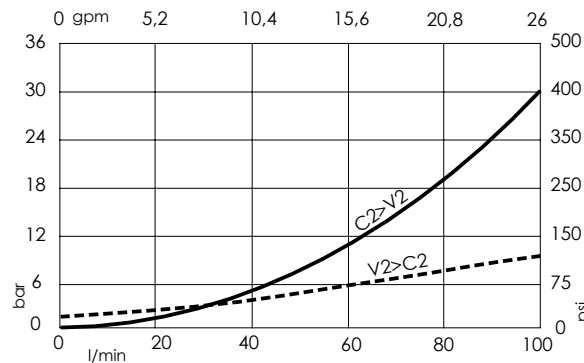
Setting: at least 1.3 times the load induced pressure.

SEALING CAP



Ordering code:
PT000243

CURVES



ORDERING CODES

| Quick code | Description | Pilot ratio | Main ports size | Standard setting Q=5 l/min (1,3 gpm) | Adjustment range | Pressure increase |
|------------|---------------------------|-------------|--|---|--------------------------------|---------------------------------|
| MB000911 | MBDN-100-ABNR-04-G12-N350 | 4:1 | V1,V2:G 1/2" C1,C2: Ø9 M1,M2:G 1/4" | 350 bar (5000 psi) | 100-350 bar (1400-5000 psi) | 118 bar/turn (1700 psi/turn) |
| | | | | | | |
| | | | | | | |
| | | | | | | |
| | | | | | | |
| | | | | | | |