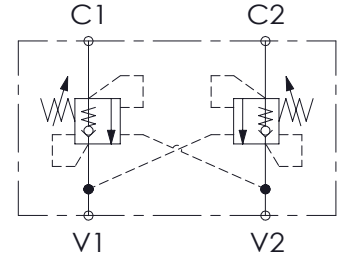
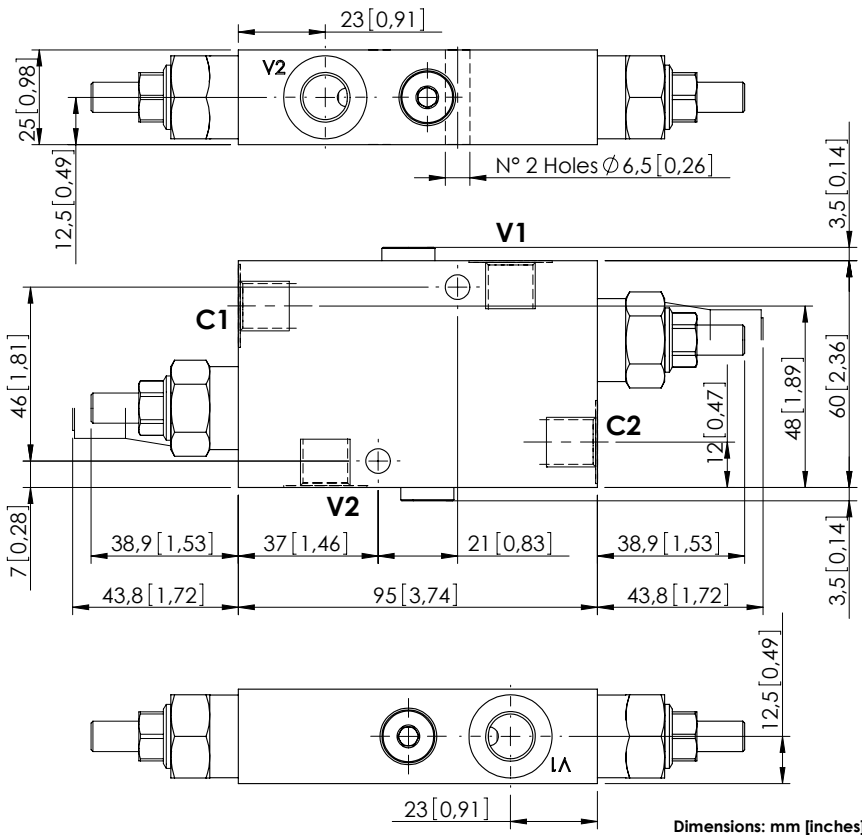


OVERCENTRE VALVE

# MBDN-040-ALNP

DOUBLE ACTING



### SPECIFICATIONS

|                                  |                     |
|----------------------------------|---------------------|
| Max. operating pressure:         | 350 bar (5000 psi)  |
| Rated flow:                      | 40 l/min (11 gpm)   |
| Manifold:                        | Steel               |
| Weight:                          | 1,11 kg (2,43 lbs)  |
| Contamination class to ISO 4406: | See technical spec. |
| MTTFa:                           | 150 years           |

### NOTES

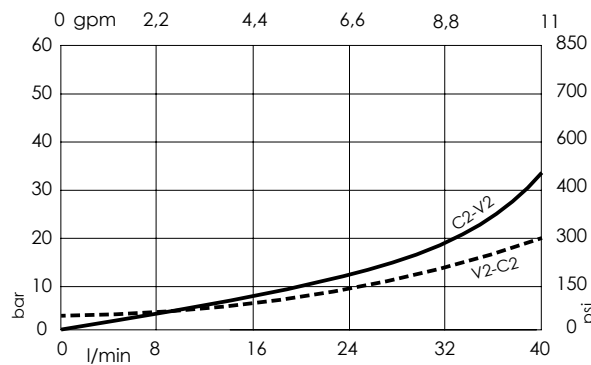
Setting: at least 1.3 times the load induced pressure.

### SEALING CAP



Ordering code:  
AT000020

### CURVES



### ORDERING CODES

| Quick code | Description               | Pilot ratio | Main ports size                | Standard setting (Q=5 l/min) | Adjustment range            | Pressure increase            |
|------------|---------------------------|-------------|--------------------------------|------------------------------|-----------------------------|------------------------------|
| MB000219   | MBDN-040-ALNP-04-G14-N350 | 4,1:1       | V1, V2: G1/4"<br>C1, C2: G1/4" | 350 bar (5000 psi)           | 100-350 bar (1400-5000 psi) | 184 bar/turn (2700 psi/turn) |
|            |                           |             |                                |                              |                             |                              |
|            |                           |             |                                |                              |                             |                              |
|            |                           |             |                                |                              |                             |                              |
|            |                           |             |                                |                              |                             |                              |