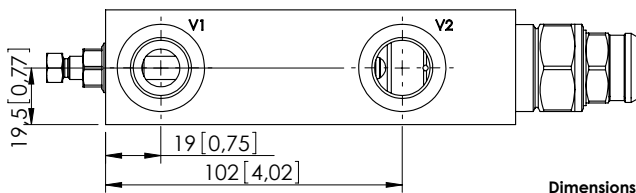
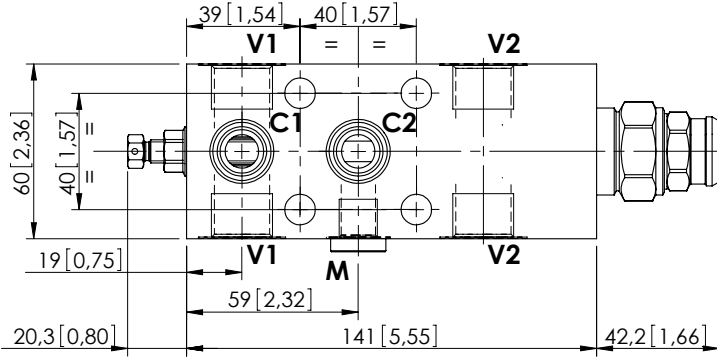
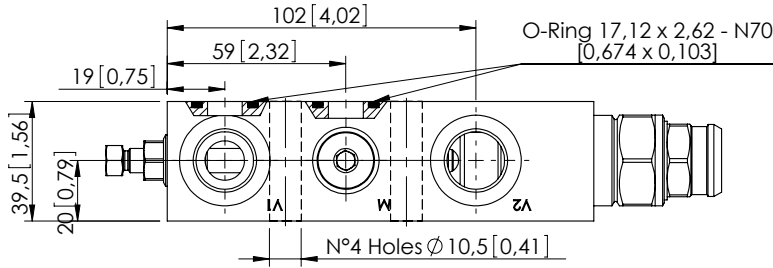


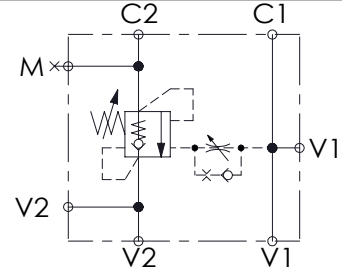
OVERCENTRE VALVE

# MBSN-150-ABNV

SINGLE ACTING  
TWO FLANGED PORTS



Dimensions: mm [inches]



### SPECIFICATIONS

Max. operating pressure:	350 bar (5000 psi)
Rated flow:	150 l/min (40 gpm)
Manifold:	Steel
Weight:	2,37 kg (5,23 lbs)
Contamination class to ISO 4406:	See technical spec.
MTTFa:	150 years

### NOTES

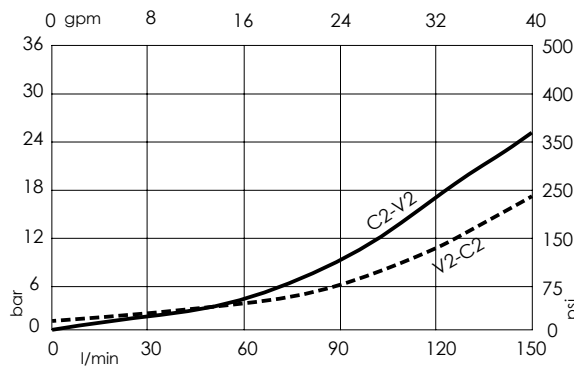
Setting: at least 1.3 times the load induced pressure.

### SEALING CAP



Ordering code:  
ST000012

### CURVES



### ORDERING CODES

Quick code	Description	Pilot ratio	Main ports size	Standard setting (Q=5 l/min)	Adjustment range	Pressure increase
MB000156	MBSN-150-ABNV-04-G12-N350	4:1	V1, V2: G1/2" M:G1/4" C1, C2: Ø11.5	350 bar (5000 psi)	100-350 bar (1400-5000 psi)	104 bar/turn (1500 psi/turn)
MB000883	MBSN-150-ABNV-08-G12-N350	8:1	V1, V2: G1/2" M:G1/4" C1, C2: Ø11.5	350 bar (5000 psi)	100-350 bar (1400-5000 psi)	84 bar/turn (1200 psi/turn)