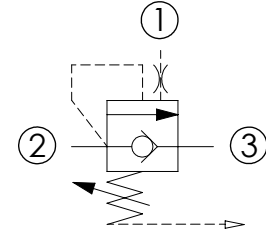
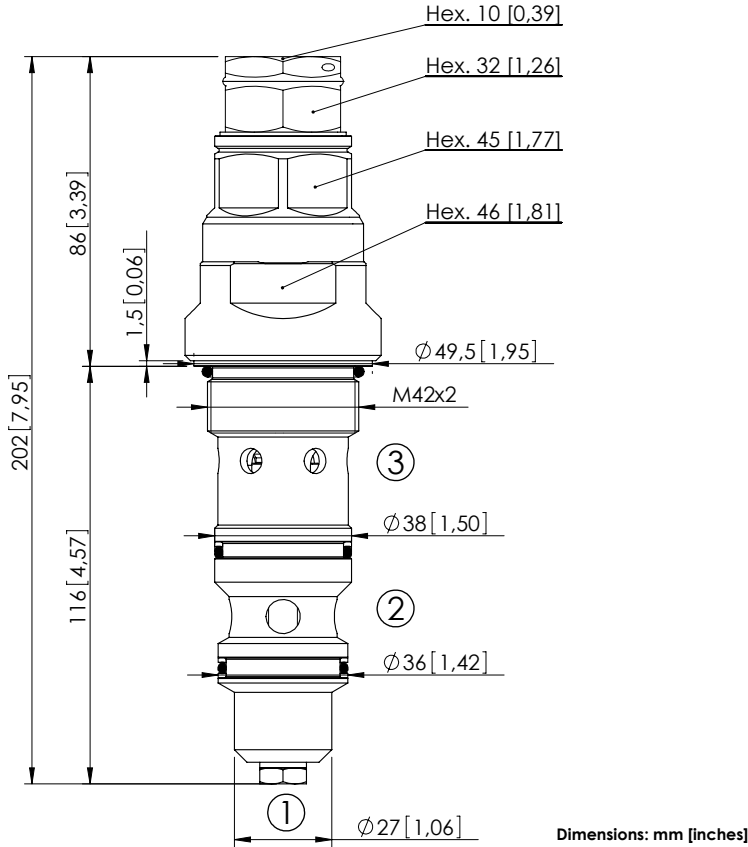


OVERCENTRE VALVE

CBST-300-DCNH

FULLY COMPENSATED



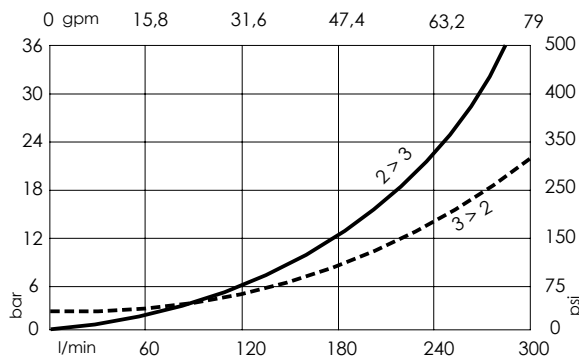
SPECIFICATIONS

Max. operating pressure:	350 bar (5000 psi)
Rated flow:	300 l/min (79 gpm)
Cavity:	VP000127
Weight:	1,49 kg (3,29 lbs)
Installation torque:	246 - 272 Nm (181 - 201 ft-lb)
Seal kit:	RD900127
Contamination class to ISO 4406:	See technical spec.
MTF _d :	150 years

NOTES

Setting: at least 1.3 times the load induced pressure.

CURVES



ORDERING CODES

Quick code	Description	Pilot ratio	Standard setting Q=5 l/min (1,3 gpm)	Adjustment range	Pressure increase
CB000017	CBST-300-DCNH-06-127-N350	6:1	350 bar (5000 psi)	100-350 bar (1400-5000 psi)	62 bar/turn (900 psi/turn)
CB000013	CBST-300-DCNH-04-127-N350	4:1	350 bar (5000 psi)	100-350 bar (1400-5000 psi)	75 bar/turn (1100 psi/turn)