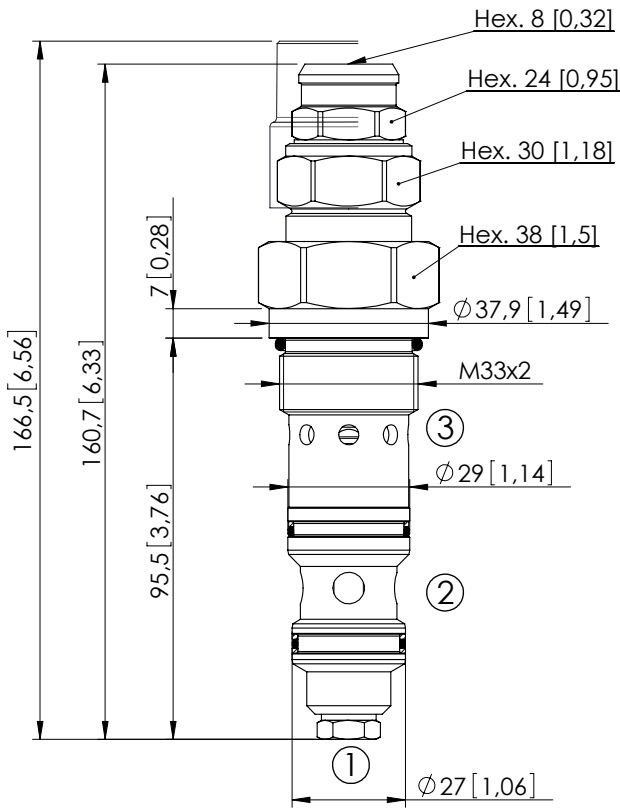


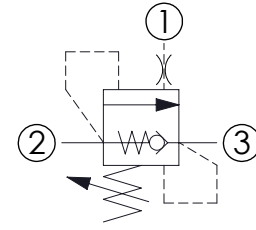
OVERCENTRE VALVE

# CBSN-150-DCNH

DIFFERENTIAL AREA



Dimensions: mm [inches]



## SPECIFICATIONS

Max. operating pressure:	350 bar (5000 psi)
Rated flow:	150 l/min (40 gpm)
Cavity:	VP000128
Weight:	0,7 kg (1,54 lbs)
Installation torque:	170 - 200 Nm (125 - 148 ft-lb)
Seal kit:	RD900128
Contamination class to ISO 4406:	See technical spec.
MTF <sub>d</sub> :	150 years

## NOTES

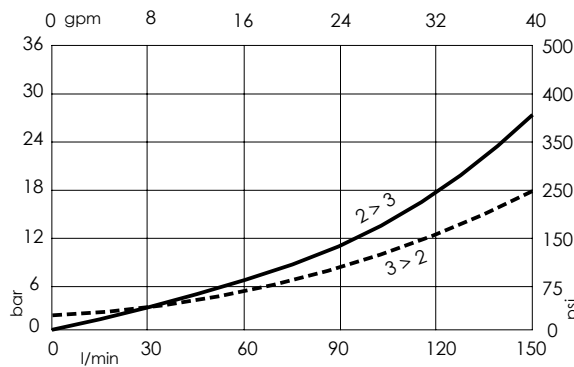
Setting: at least 1.3 times the load induced pressure.

## SEALING CAP



Ordering code:  
ST000012

## CURVES



## ORDERING CODES

Quick code	Description	Pilot ratio	Standard setting Q=5 l/min (1,3 gpm)	Adjustment range	Pressure increase
CB000004	CBSN-150-DCNH-04-128-N350	4:1	350 bar (5000 psi)	100-350 bar (1400-5000 psi)	103 bar/turn (1500 psi/turn)
CB000043	CBSN-150-DCNH-08-128-N350	8:1	350 bar (5000 psi)	100-350 bar (1400-5000 psi)	82 bar/turn (1200 psi/turn)