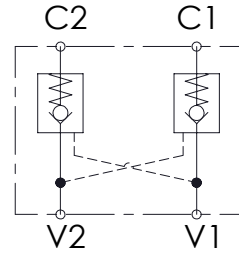
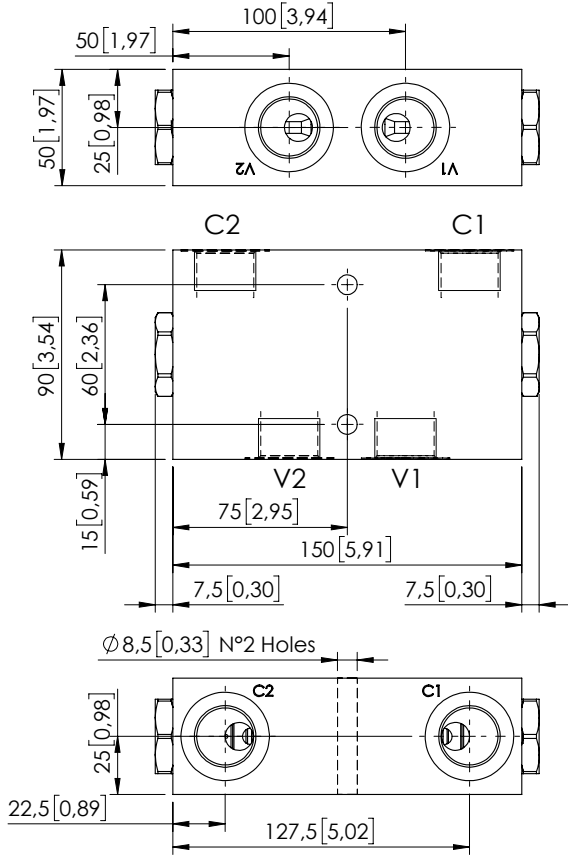


PILOT OPERATED CHECK VALVE

# MCDN-100-LLNR

DOUBLE ACTING

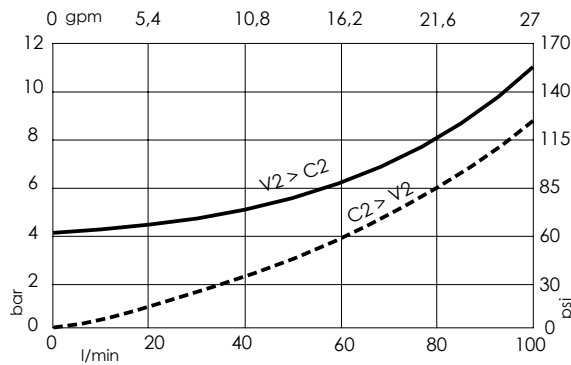


## SPECIFICATIONS

Max. operating pressure:	350 bar (5000 psi)
Rated flow:	100 l/min (27 gpm)
Manifold:	Aluminium
Weight:	1,8 kg (3,97 lbs)
Contamination class to ISO 4406:	See technical spec.
MTTFa:	150 years

## NOTES

## CURVES



## ORDERING CODES

Quick code	Description	Main ports size	Pilot ratio	Cracking pressure	O-ring on pilot piston
MC000144	MCDN-100-LLNR-04-G34-N004	V1,V2,C1,C2 : G3/4"	4:1	4 bar (50 psi)	NO