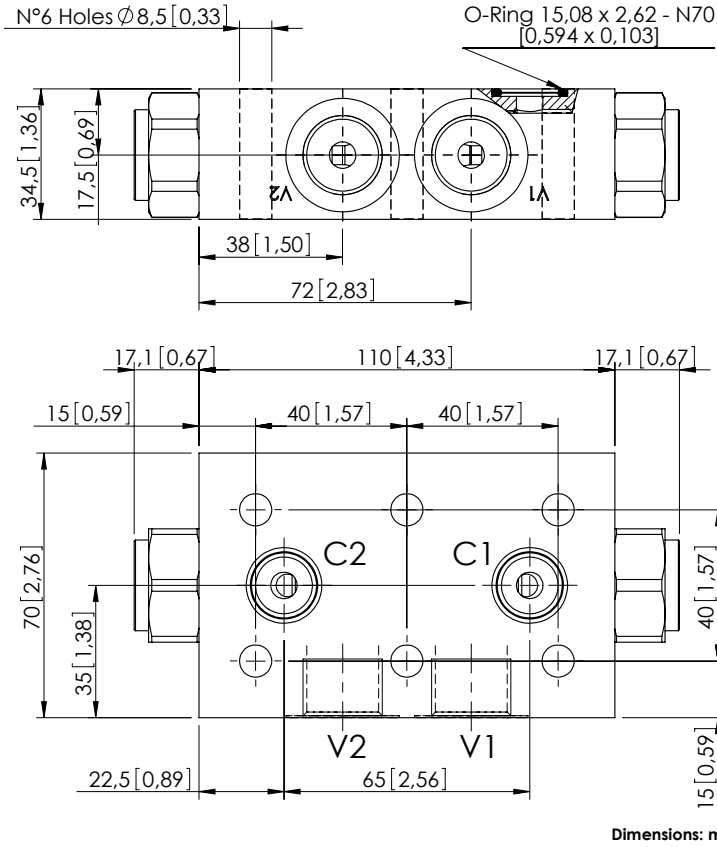


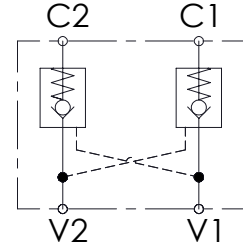
PILOT OPERATED CHECK VALVE

# MCDN-060-TBNS

DOUBLE ACTING  
TWO FLANGED PORTS



Dimensions: mm [inches]

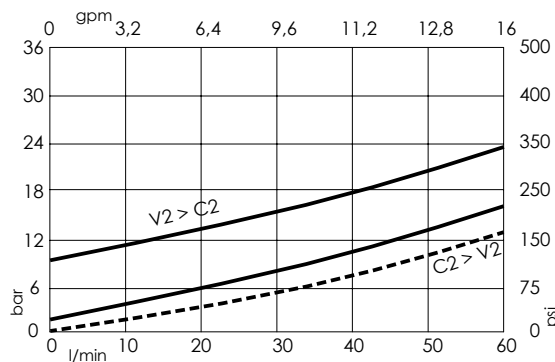


## SPECIFICATIONS

Max. operating pressure:	350 bar (5000 psi)
Rated flow:	60 l/min (16 gpm)
Manifold:	Aluminium
Weight:	0,9 kg (1,98 lbs)
Contamination class to ISO 4406:	See technical spec.
MTF <sub>d</sub> :	150 years

## NOTES

## CURVES



## ORDERING CODES

Quick code	Description	Main ports size	Pilot ratio	Cracking pressure	O-ring on pilot piston
MC000029	MCDN-060-TBNS-03-G12-N001	V1,V2:G 1/2" C1,C2:Ø7	3:1	1 bar (15 psi)	NO
MC000027	MCDN-060-TBNS-03-G12-N008	V1,V2:G 1/2" C1,C2:Ø7	3:1	8 bar (100 psi)	NO
MC000028	MCDN-060-TBNC-03-G12-N008	V1,V2:G 1/2" C1,C2:Ø7	3:1	1 bar (15 psi)	YES
MC000026	MCDN-060-TBNS-06-G12-N001	V1,V2:G 1/2" C1,C2:Ø7	3:1	8 bar (100 psi)	NO
MC000025	MCDN-060-TBNS-06-G12-N008	V1,V2:G 1/2" C1,C2:Ø7	3:1	1 bar (15 psi)	NO
MC000022	MCDN-060-TBNC-06-G12-N008	V1,V2:G 1/2" C1,C2:Ø7	3:1	8 bar (100 psi)	YES