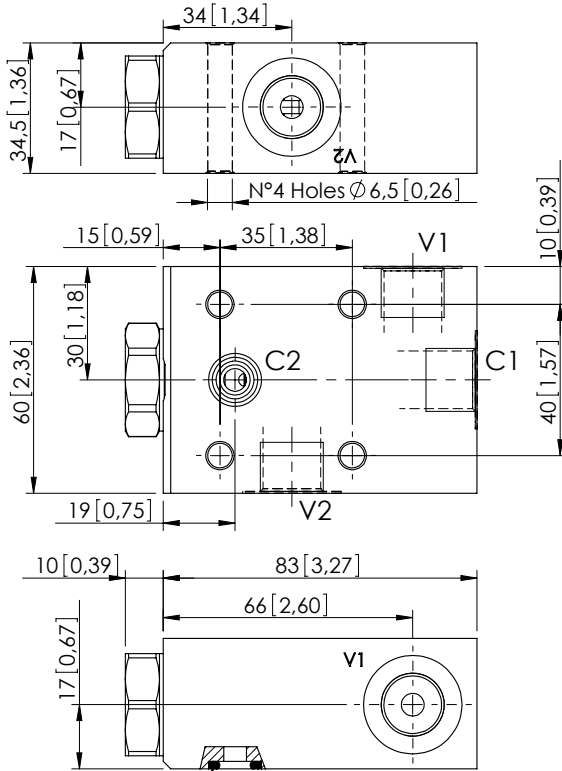


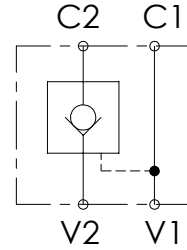
PILOT OPERATED CHECK VALVE

# MCSN-030-TANS

SINGLE ACTING  
ONE FLANGED PORT



Dimensions: mm [inches]

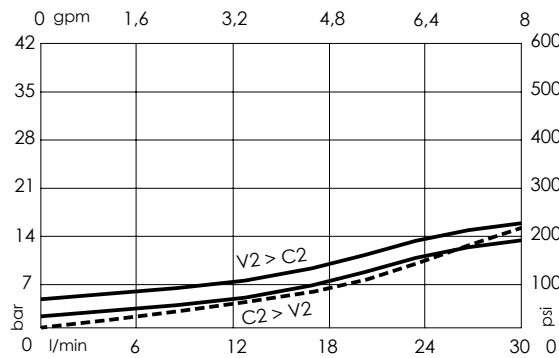


## SPECIFICATIONS

|                                  |                     |
|----------------------------------|---------------------|
| Max. operating pressure:         | 350 bar (5000 psi)  |
| Rated flow:                      | 30 l/min (8 gpm)    |
| Manifold:                        | Aluminium           |
| Weight:                          | 0,49 kg (1,08 lbs)  |
| Contamination class to ISO 4406: | See technical spec. |
| MTFa:                            | 150 years           |

## NOTES

## CURVES



## ORDERING CODES

| Quick code | Description               | Main ports size             | Pilot ratio | Cracking pressure | O-ring on pilot piston |
|------------|---------------------------|-----------------------------|-------------|-------------------|------------------------|
| MC000064   | MCSN-030-TANS-07-G38-N001 | V1,V2,C1: G 3/8"<br>C2: Ø 6 | 7:1         | 1 bar (15 psi)    | NO                     |
| MC000066   | MCSN-030-TANS-07-G38-N005 | V1,V2,C1: G 3/8"<br>C2: Ø 6 | 7:1         | 5 bar (75 psi)    | NO                     |
| MC000068   | MCSN-030-TANC-07-G38-N005 | V1,V2,C1: G 3/8"<br>C2: Ø 6 | 7:1         | 5 bar (75 psi)    | YES                    |
|            |                           |                             |             |                   |                        |
|            |                           |                             |             |                   |                        |