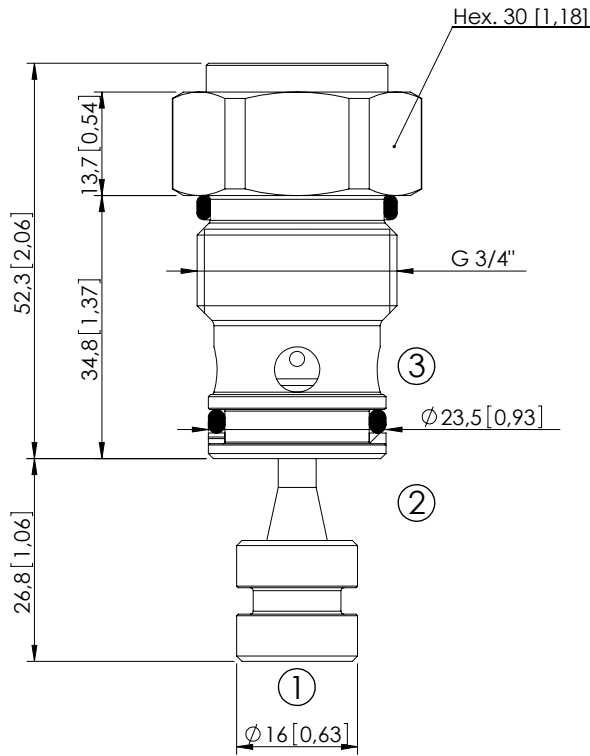
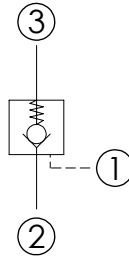


CDPN-060-PSNN

SEPARATE PILOT
POPPET TYPE



Dimensions: mm [inches]

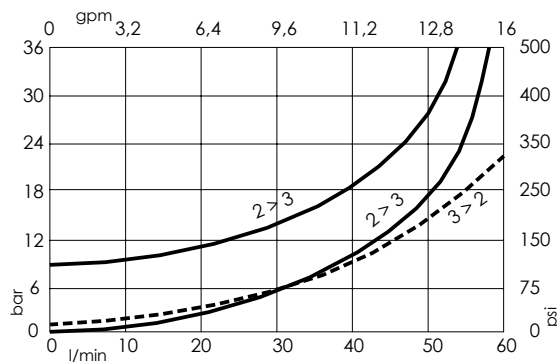


SPECIFICATIONS

Max. operating pressure:	350 bar (5000 psi)
Rated flow:	60 l/min (16 gpm)
Cavity:	VP000038
Weight:	0,2 kg (0,44 lbs)
Pilot ratio:	3:1
Contamination class to ISO 4406:	See technical spec.
Seal kit:	RC700038
Installation torque:	100 - 130 Nm (74 - 96 ft-lb)
MTF _a :	150 years

NOTES

CURVES



ORDERING CODES

Quick code	Description	Cracking pressure	O-ring on pilot piston
SC000052	CDPN-060-PSNN-03-038-N001	1 bar (15 psi)	NO
SC000054	CDPN-060-PSNN-03-038-N008	8 bar (100 psi)	NO
SC000055	CDPN-060-PSNE-03-038-N008	8 bar (100 psi)	YES