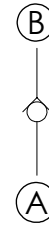
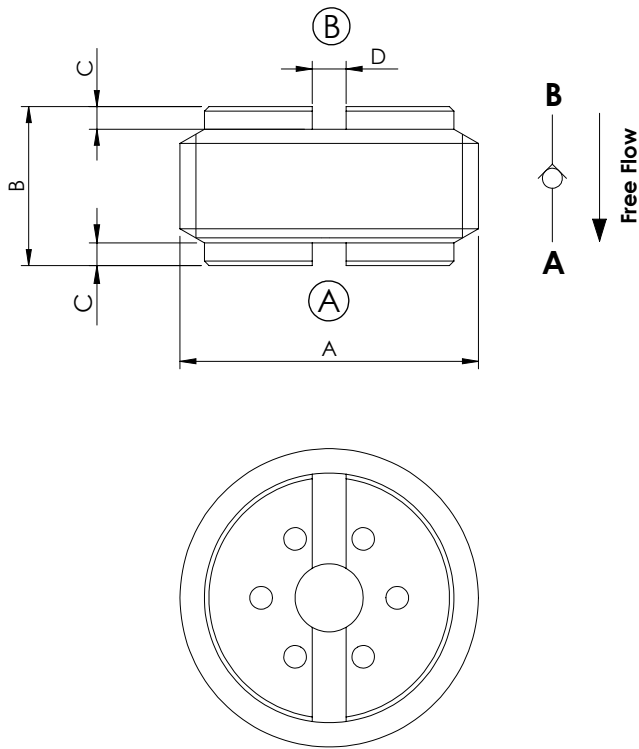


CHECK VALVE

CDVN-010-DSNS

INSERT TYPE
DOUBLE MOUNTING



SPECIFICATIONS

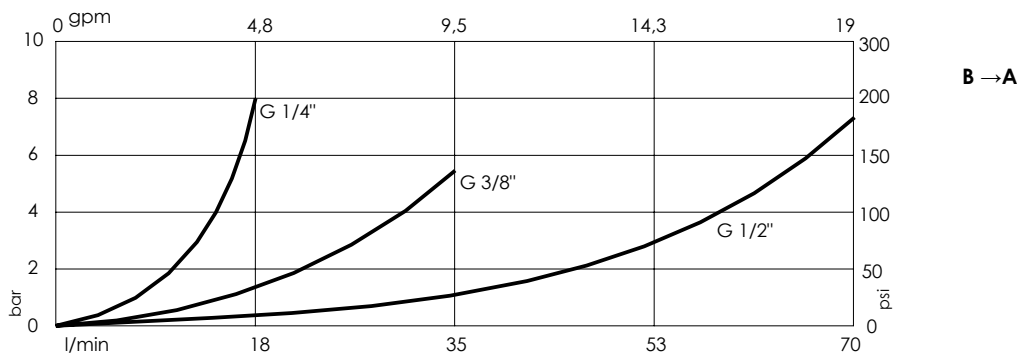
Max. operating pressure:	350 bar (5000 psi)
Weight:	0,01 kg (0,02 lbs)
Contamination class to ISO 4406:	See technical spec.
MTTF _d :	150 years

Dimensions: mm [inches]

NOTES

- Disk type
- Not leak proof
- Without spring

CURVES



ORDERING CODES

Quick code	Description	Installation torque	Cracking pressure	Rated flow	Dimension			
					A	B	C	D
CD000150	CDVN-010-DSNS-00-G14-N350	5 Nm (4 ft-lb)	0	10 l/min (3 gpm)	G 1/4"	7 [0,28]	1 [0,04]	1,5 [0,06]
CD000148	CDVN-030-DSNS-00-G38-N350	10 Nm (7 ft-lb)	0	30 l/min (8 gpm)	G 3/8"	7,5 [0,3]	1 [0,04]	1,5 [0,06]
CD000151	CDVN-070-DSNS-00-G12-N350	10 Nm (7 ft-lb)	0	70 l/min (19 gpm)	G 1/2"	11 [0,43]	1,5 [0,06]	1,5 [0,06]