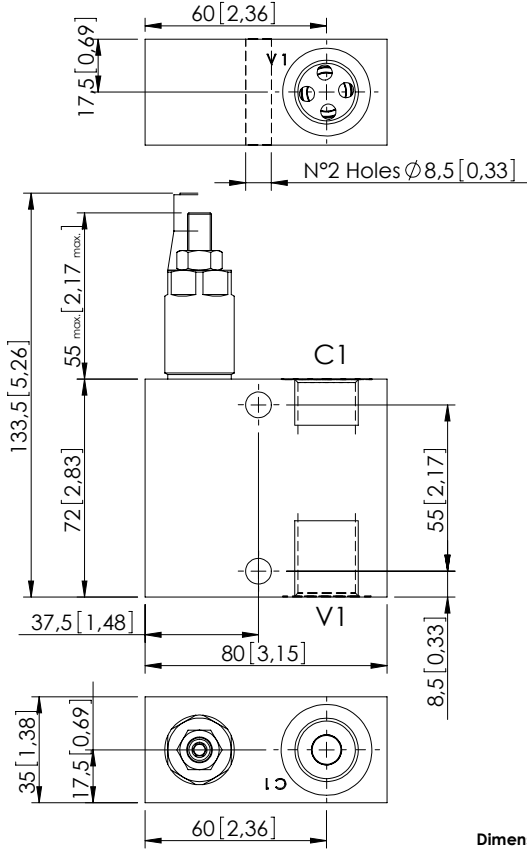


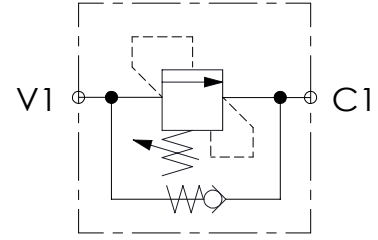
SEQUENCE VALVE IN BODY

# KPSN-030-DPNA

DIRECT ACTING  
STABILIZED PISTON  
NOT COMPENSATED



Dimensions: mm [inches]

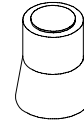


## SPECIFICATIONS

Max. operating pressure:	350 bar (5000 psi)
Rated flow:	30 l/min (450 gpm)
Manifold:	Aluminium
Weight:	0,64 kg (1,41lbs)
Contamination class to ISO 4406:	See technical spec.
MTTFa:	150 years

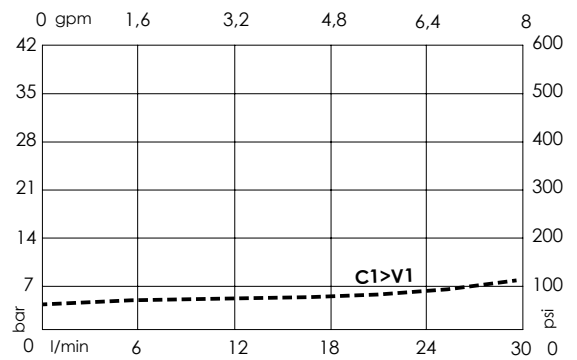
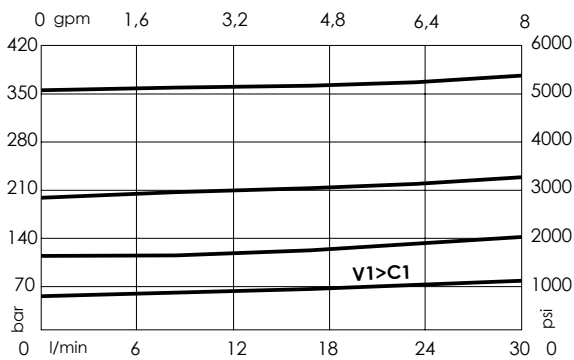
## NOTES

## SEALING CAP



Ordering code:  
AT000020

## CURVES



## ORDERING CODES

Quick code	Description	Main ports size	Standard setting Q=5 l/min (1,3 gpm)	Adjustment range	Pressure increase
KP000061	KPSN-030-DPNA-HN-G12-N350	C1, V1: G 1/2"	350 bar (5000 psi)	100-350 bar (1400-5000 psi)	91 bar/turn (1300 psi/turn)
KP000062	KPSN-030-DPNA-HN-G12-N200	C1, V1: G 1/2"	200 bar (2900 psi)	50-210 bar (700-3000 psi)	42 bar/turn (600 psi/turn)
KP000060	KPSN-030-DPNA-HN-G12-N100	C1, V1: G 1/2"	100 bar (1400 psi)	30-100 bar (450-1400 psi)	20 bar/turn (300 psi/turn)
KP000063	KPSN-030-DPNA-HN-G12-N050	C1, V1: G 1/2"	50 bar (700 psi)	10-50 bar (150-700 psi)	10 bar/turn (150 psi/turn)