

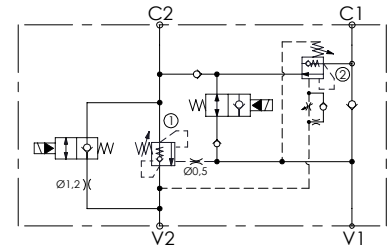
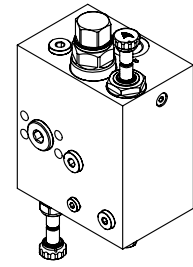
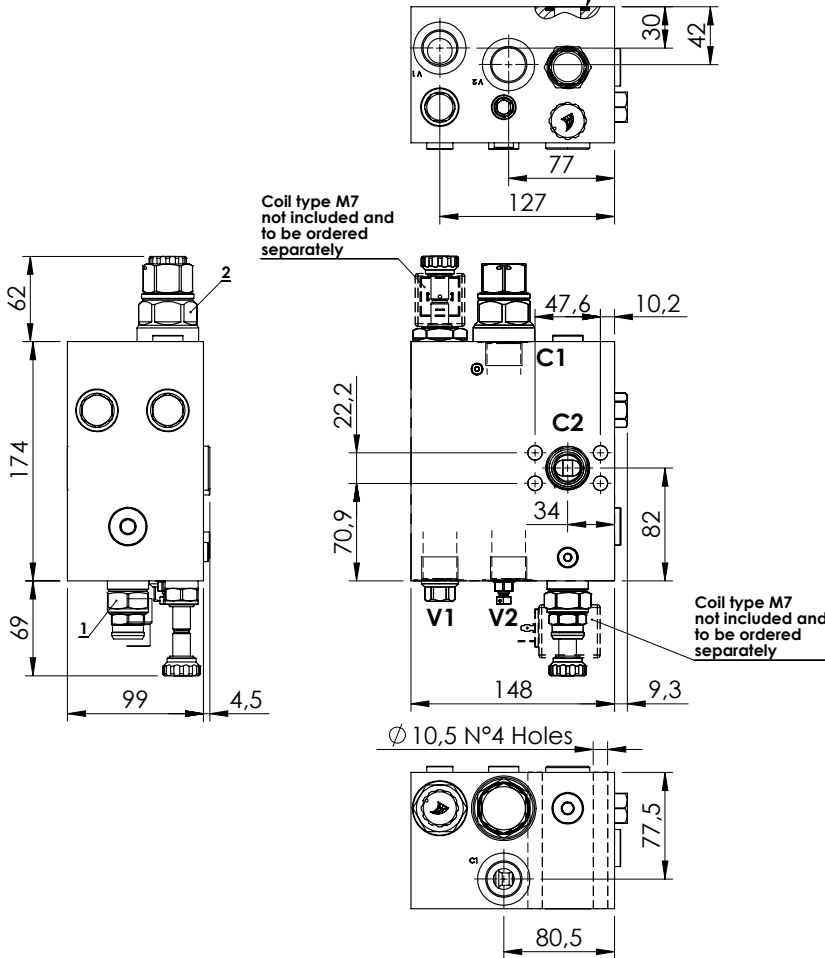
**HOOK LOADERS**

**MRLN-150-ZABE**

**REGENERATIVE WITH ELECTRIC BY-PASS**



O-Ring 23.39x3.53 - N70



**SPECIFICATIONS**

Max. operating pressure:	350 bar
Rated flow:	150 l/min
Manifold:	Aluminium
Weight:	7,59 kg
Coil type:	M7

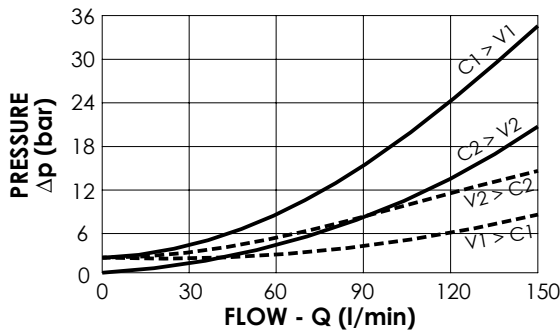
**SEALING CAP**

Ordering code:  
ST000012



**NOTES**

Setting: at least 1.3 times the load induced pressure



**ORDERING CODES**

Quick code	Description	Pilot ratio	Main ports size	Standard setting (bar, Q=5 l/min)	Adjust. range (bar)	Pressure increase (bar/turn)
MB000119	MRLN-150-ZABE-04-G34-N350	4:1	V2,C2,C1: G3/4" C2: Ø22	350	100-350	104