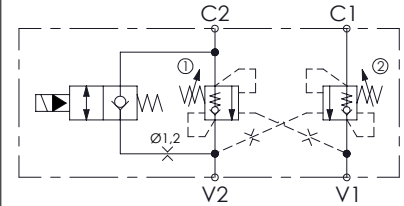
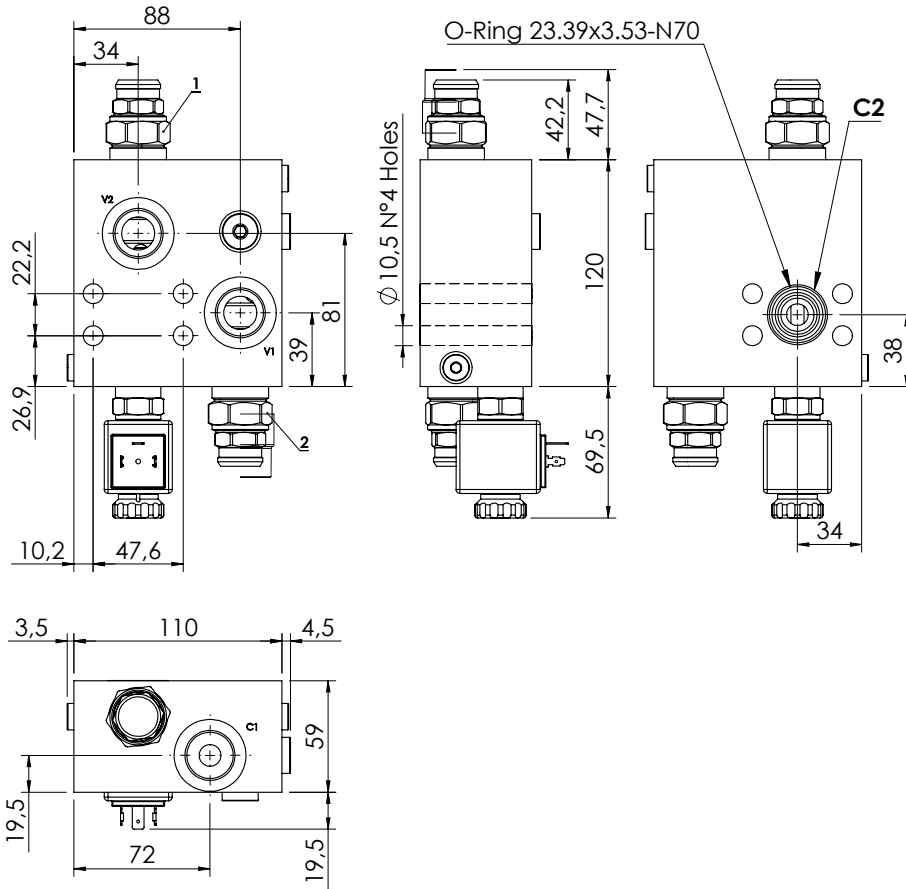
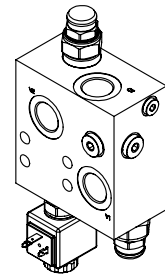


HOOK LOADERS

MBDN-150-ZABE

**DOUBLE ACTING
WITH ELECTRIC BY-PASS**



SPECIFICATIONS

Max. operating pressure:	350 bar
Rated flow:	150 l/min
Manifold:	Steel
Weight:	2,75 kg
Coil:	M7 Type
Voltage - Class:	26V - H
Connector:	DIN 43650

SEALING CAP

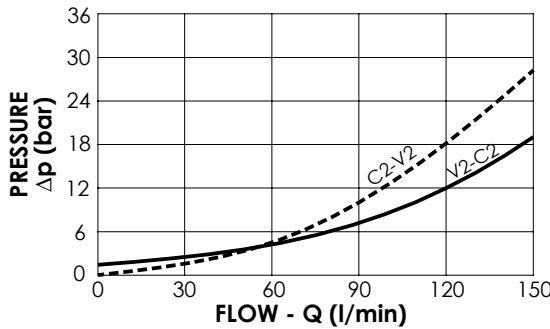
Ordering code:

ST000012



NOTES

Setting: at least 1.3 times the load induced pressure



ORDERING CODES

Quick code	Description	Pilot ratio	Main ports size	Standard setting (bar, Q=5 l/min)	Adjust. range (bar)	Pressure increase (bar/turn)
MB000915	MBDN-150-ZABE-04-G34-N350	4:1	V1,V2,C1: G3/4" C2: 3/4 SAE 3000	350	100-350	104