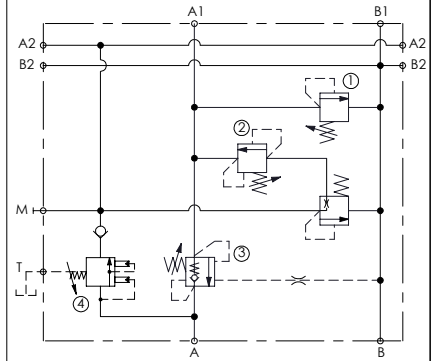
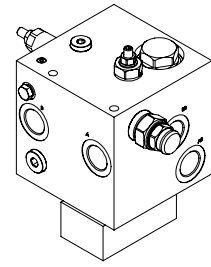
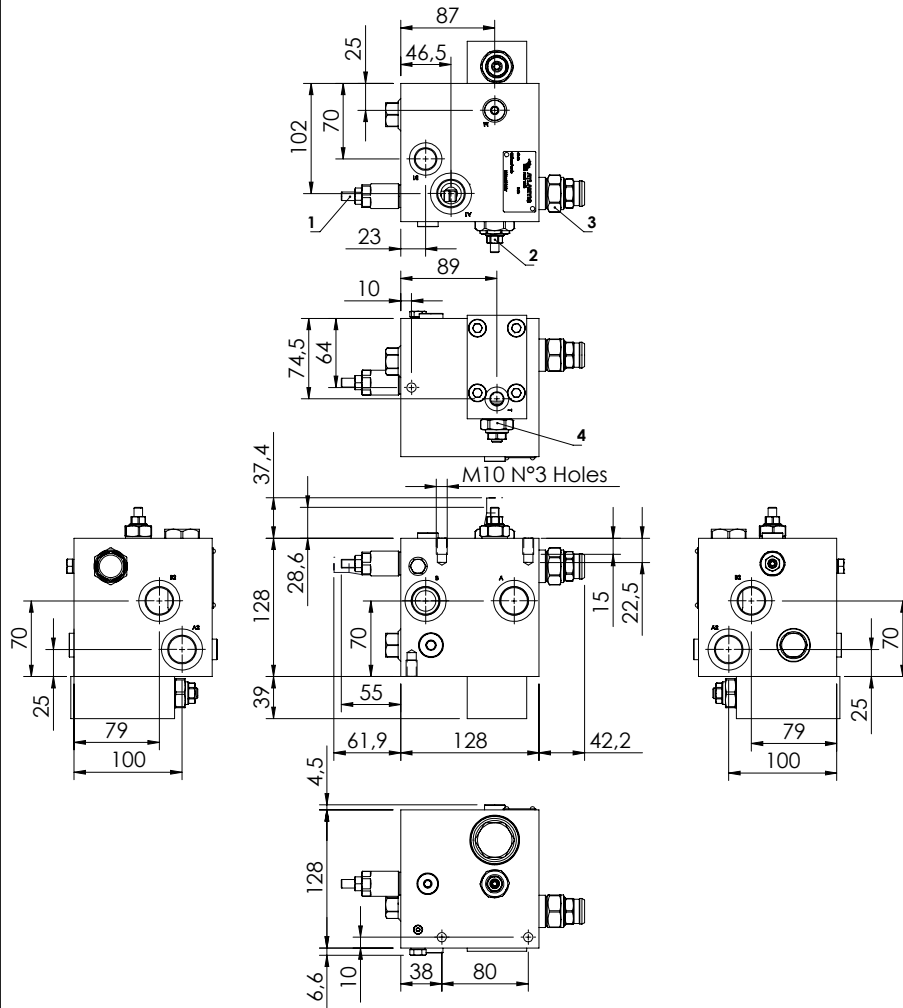


GARBAGE COMPACTORS

BNND-150-NLBCU



SPECIFICATIONS

Max. operating pressure:	350 bar
Rated flow:	150 l/min
Manifold:	Aluminium
Weight:	3,2 kg

SEALING CAP

Ordering code:

AT000020
Relief valve



ST000012
Counterbalance valve



ORDERING CODES

Quick code	Description	Main ports size	Standard setting (bar, Q=5 l/min)	Adjustment range (bar)	Pressure increase (bar/turn)
BD000131	BNND-150-NLBCU-08-G34-N350	A,A1,A2,B,B2: G3/4" B1: G1/2" M.T: G1/4"	① 280 ③ 230 ② 50 ④ 175	① 100-350 ③ 60-210 ② 90-210 ④ 140-350	① 91 ③ 50 ② 87 ④ 70,5