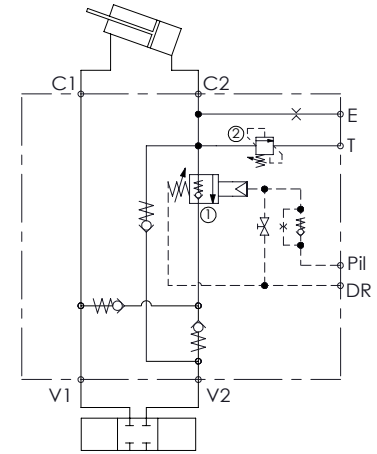
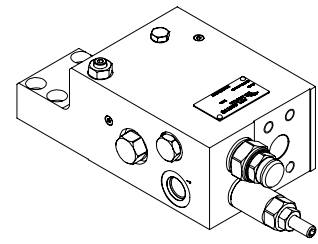
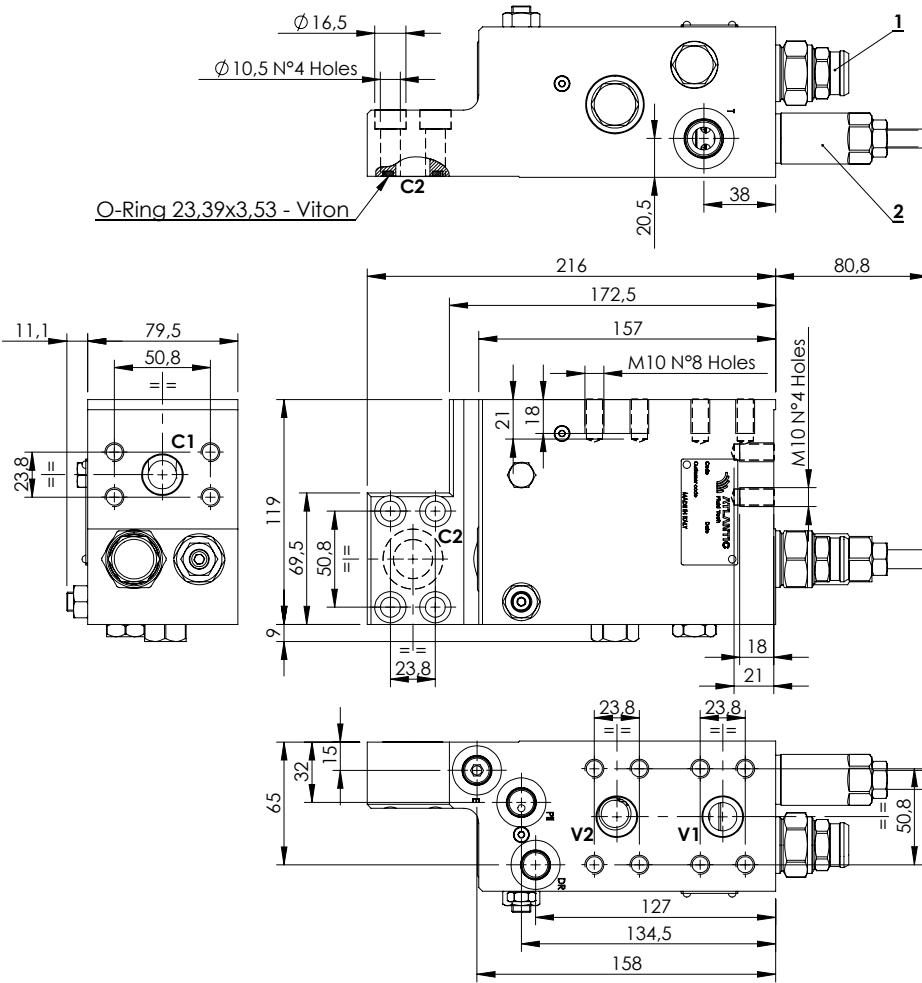


EXCAVATORS VALVE

MLST-250-RAUL

**FLANGED TYPE
3/4" SAE 6000
WITH OIL RECOVERY**

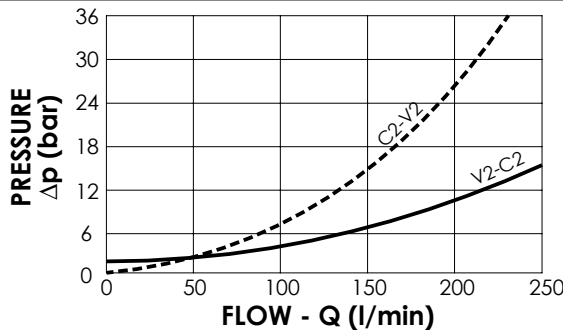


SPECIFICATIONS

Max. operating pressure:	420 bar
Rated flow:	250 l/min
Manifold:	Steel
Weight:	11,72 kg

NOTES

When correctly adjusted for the special excavator installation, these valves meet the requirement of ISO 8643



ORDERING CODES

Quick code	Description	Main ports size	Standard setting (bar)	Adjust. range (bar)	Pressure increase (bar/turn)
ML000266	MLST-250-RAUL-00-S34-N420	V1,V2,C1,C2: 3/4" SAE 6000 E,Pil,Dr: 9/16-18 UNF T: 3/4-16 UNF	① 7.9 Crack. pr. ② 395 Q=5 l/min	① 3-15 ② 150-420	① 6 ② 53