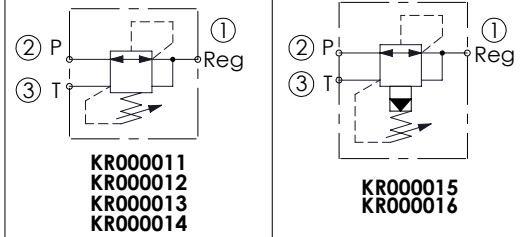
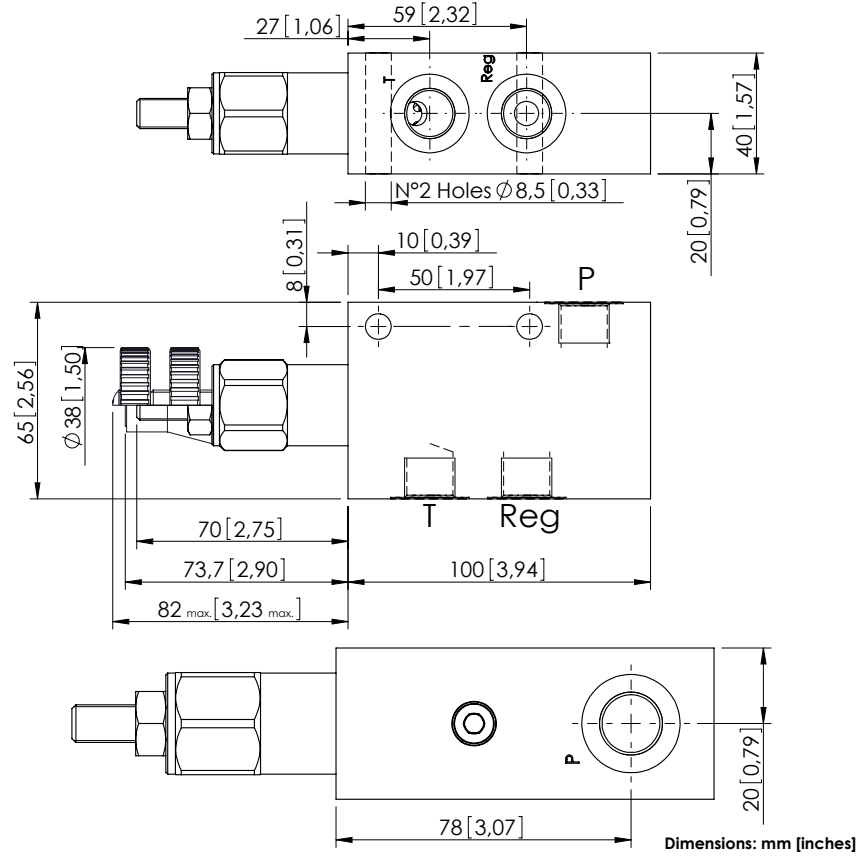


PRESSURE REDUCING AND RELIEVING IN BODY

KPRL-030-DNNR

DIRECT/PILOT ACTING
SPOOL TYPE



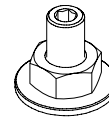
SPECIFICATIONS

Max. operating pressure:	250 bar (3600 psi)
Rated flow:	30 - 60 l/min (8 - 16 gpm)
Cavity:	SAE-10-3N
Weight:	0,9 kg (1,98 lbs)
Leakage:	50 cm ³ /min @ 50 bar 3,05 in ³ /min @ 700 psi
Manifold:	Aluminium
Contamination class to ISO 4406:	See technical spec.
MTTF _d :	150 years

NOTES

OPTIONS

SEALING CAP



Adjustment
with
Screw

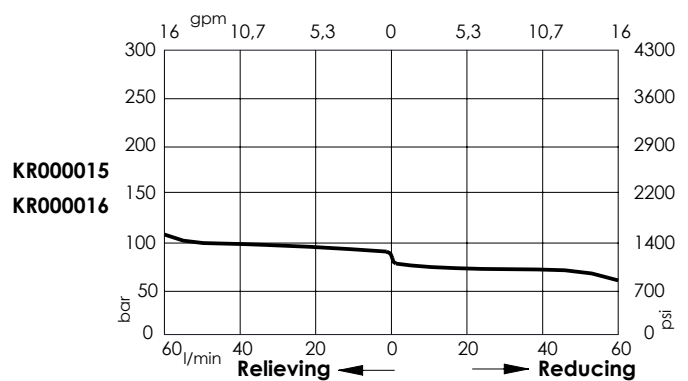
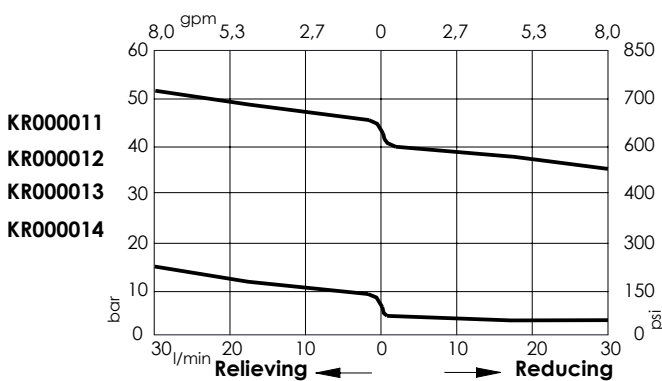


Adjustment
with
Handknob



Ordering code:
AT000022

CURVES



ORDERING CODES

Quick code	Description	Ports	Standard setting	Adjustment range	Pressure increase	Options
KR000011	KPRL-030-DNNR-HN-G38-N250	P,T,Reg: G 3/8"	5 bar (75 psi)	1.5-15 bar (25-75 psi)	1.6 bar/turn (25 psi/turn)	Adjustment with Screw
KR000012	KPRL-030-DNNR-VN-G38-N250	P,T,Reg: G 3/8"	5 bar (75 psi)	1.5-15 bar (25-75 psi)	1.6 bar/turn (25 psi/turn)	Adjustment with Handknob
KR000013	KPRL-030-DNNR-HN-G38-N250	P,T,Reg: G 3/8"	35 bar (500 psi)	10-50 bar (150-700 psi)	7 bar/turn (100 psi/turn)	Adjustment with Screw
KR000014	KPRL-030-DNNR-VN-G38-N250	P,T,Reg: G 3/8"	35 bar (500 psi)	10-50 bar (150-700 psi)	7 bar/turn (100 psi/turn)	Adjustment with Handknob
KR000015	KPRL-060-PNNR-HN-G38-N250	P,T,Reg: G 3/8"	80 bar (1100 psi)	20-110 bar (300-1600 psi)	37 bar/turn (550 psi/turn)	Adjustment with Screw
KR000016	KPRL-060-PNNR-VN-G38-N250	P,T,Reg: G 3/8"	80 bar (1100 psi)	20-110 bar (300-1600 psi)	37 bar/turn (550 psi/turn)	Adjustment with Handknob