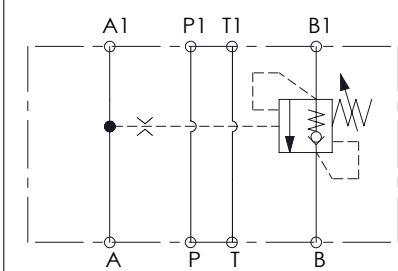
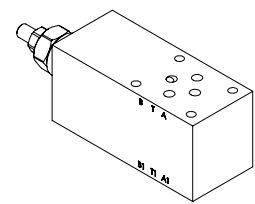
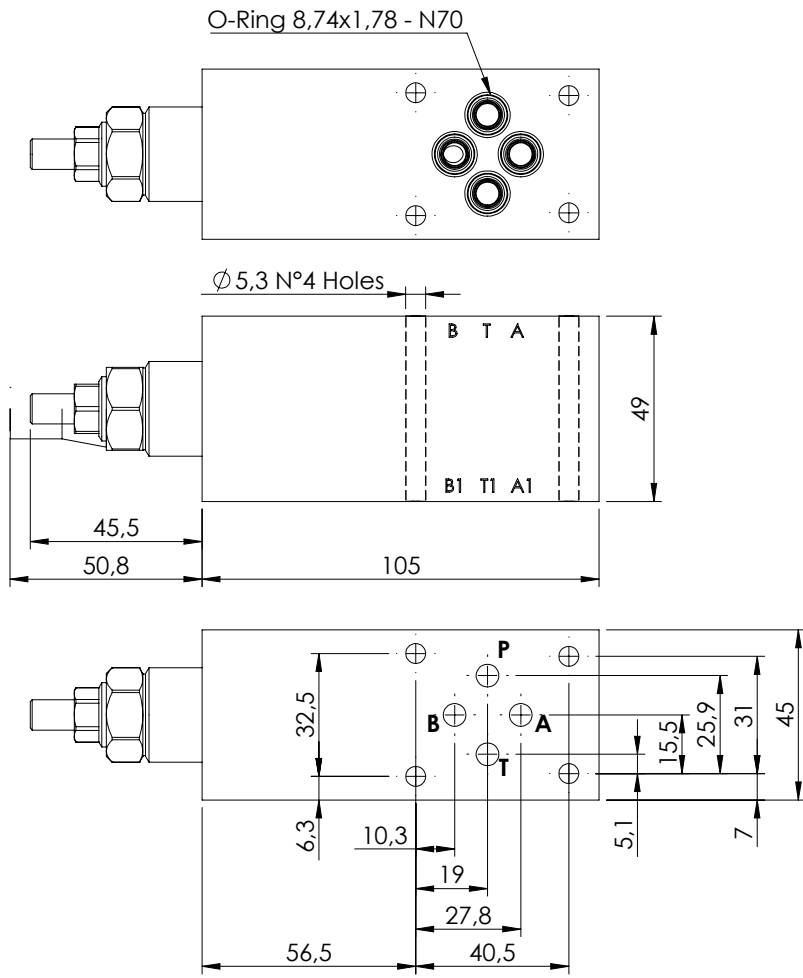


CETOP AND MODULAR VALVE

MBSN-060-ARNR

SINGLE ACTING
CETOP 3

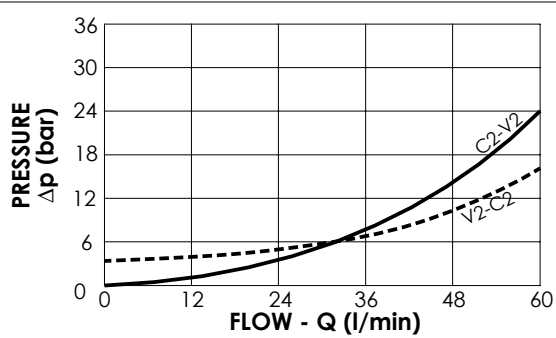
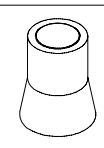


SPECIFICATIONS

| | |
|--------------------------|----------|
| Max. operating pressure: | 350 bar |
| Rated flow: | 60 l/min |
| Manifold: | Steel |
| Weight: | 1,78 kg |

SEALING CAP

Ordering code:
AT000020



NOTES

Setting: at least 1.3 times the load induced pressure

ORDERING CODES

| Quick code | Description | Pilot ratio | Main ports size | Standard setting (bar, Q=5 l/min) | Adjust. range (bar) | Pressure increase (bar/turn) |
|------------|---------------------------|-------------|------------------|-----------------------------------|---------------------|------------------------------|
| MB000886 | MBSN-060-ATNR-04-N06-N350 | 4,2:1 | A,B,P,T: CETOP 3 | 350 | 100-350 | 139 |
| | | | | | | |
| | | | | | | |
| | | | | | | |
| | | | | | | |