

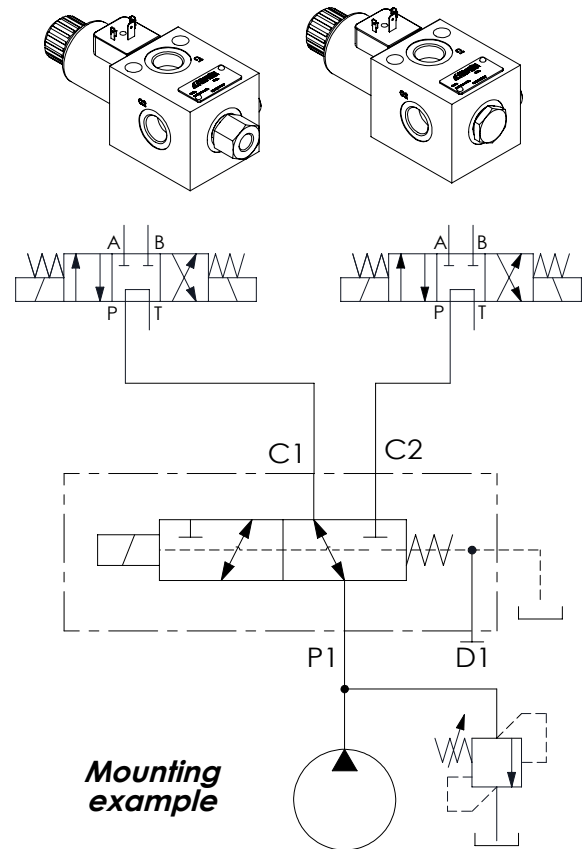
FLOW DIVERTERS

ESCB-090

3 WAYS FLOW DIVERTERS



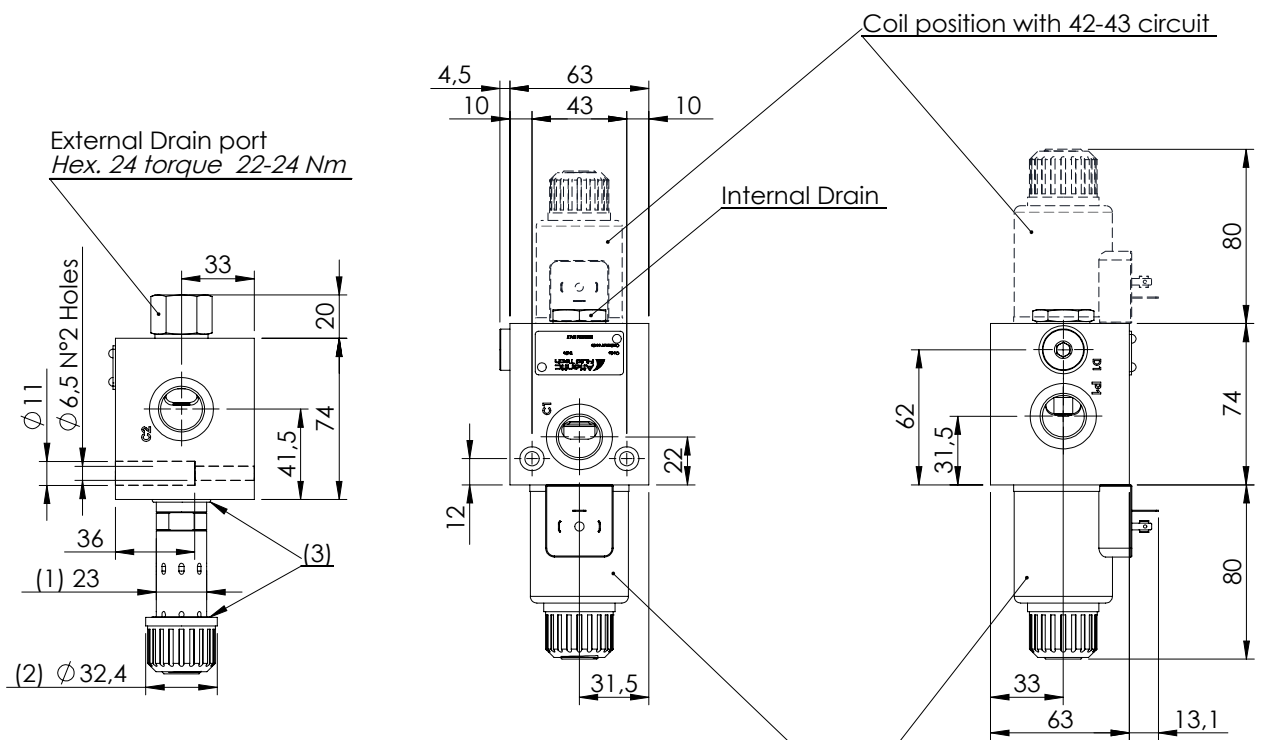
**	Circuit	Transit position
40		
41		
42		
43		



Technical data

Rated flow	l/min	90
Operating pressure	with internal drain "N"	bar 250
	with external drain "E"	bar 310
Valve weight	Kg	2,4

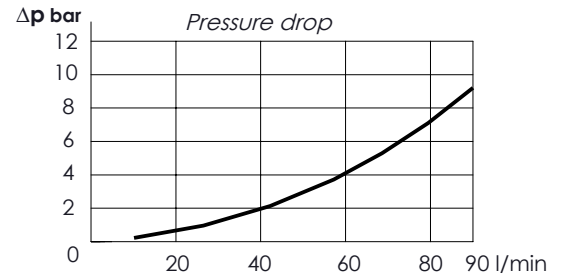
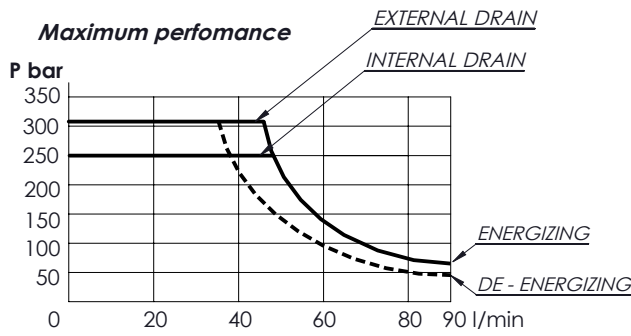
OVERALL DIMENSIONS



- (1) Solenoid tube hex.20 - Torque 18-22 Nm
- (2) Ring nut for coil locking - Torque 7-8 Nm
- (3) O-Ring $\varnothing 21,95 \times 1,78 - 22,22 \times 2,62$ (smaller one near manifold)

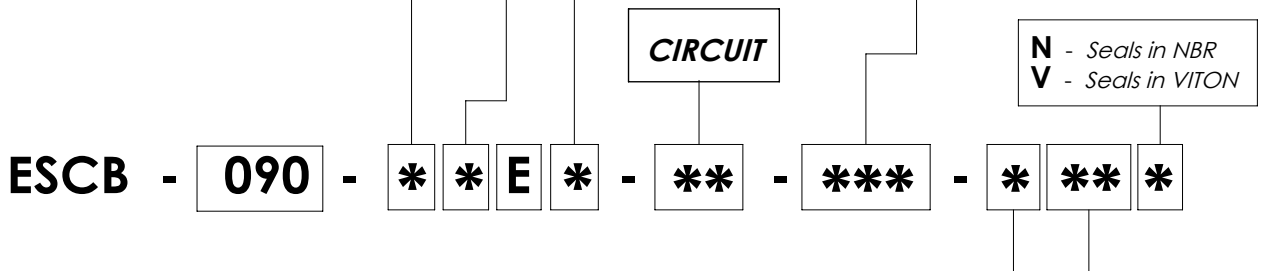
Characteristic curves

Measured with hydraulic fluid ISO-VG46 at 40° ± 5°C



Internal leakage on C ports : MAX 25 cm³/min - Mineral oil with 32 cSt viscosity, at 40° C and 100 bar pressure

*	OPERATED	<i>Circuit</i>	*	MANUAL OVERRIDE	*	DRAIN	<i>Circuit</i>															
E	Electric 		S	Standard 	N	Internal 																
N	Hydraulic/pneumatic 		V	Screw 	E	External 																
<p>(4) Hydraulic or pneumatic pilot connector: hex 30 mm - Torque 20-22 Nm</p> <p>With external drain Pilot Pressure Min. 5 bar</p> <p>With internal drain Pilot Pressure is 1/10 of the working pressure</p>			N	Without manual override	<table border="1"> <thead> <tr> <th colspan="3">PORTS</th> </tr> <tr> <th>***</th> <th>Main (C)</th> <th>Drain (D)</th> </tr> </thead> <tbody> <tr> <td>G12</td> <td>1/2" Gas</td> <td>1/4" Gas</td> </tr> <tr> <td> </td> <td> </td> <td> </td> </tr> <tr> <td colspan="3">Other port sizes available</td> </tr> </tbody> </table>			PORTS			***	Main (C)	Drain (D)	G12	1/2" Gas	1/4" Gas				Other port sizes available		
PORTS																						
***	Main (C)	Drain (D)																				
G12	1/2" Gas	1/4" Gas																				
Other port sizes available																						



*	Voltage (V)	Resistance (Ω) ± 7%	Power (W)	Current (A)
-	Without coil			
A	12 DC	3,27	44	3,67
B	24 DC	13,09	44	1,83
Other voltages available on request				

*	COIL	Type	Protection class
-	Without coil		
HR	DIN 43650 - ISO 4400 Class H	M11	IP65
AJ	AMP JUNIOR Class H	M11	IP65
DT	DEUTSCH DT04-2P-L Class H	M11	IP69