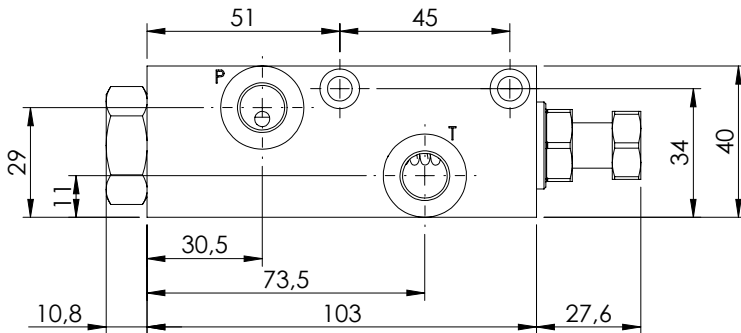
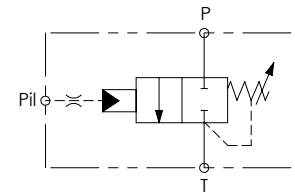
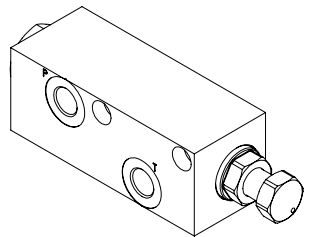
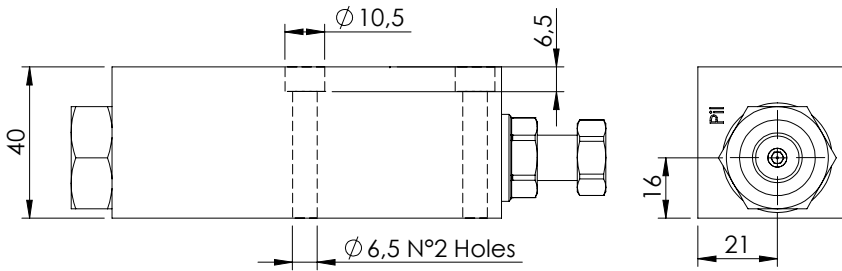


LOAD LIMITING DEVICE

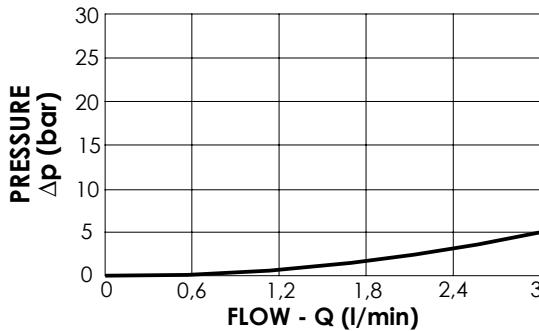
MTTP-003-TLSN

**HYDRAULIC PRESSURE
UNLOADING
2 WAYS**



SPECIFICATIONS

Max. operating pressure:	350 bar
Rated flow:	3 l/min
Manifold:	Aluminium
Weight:	0,55 kg



NOTES

ORDERING CODES

Quick code	Description	Main ports size	Standard setting (bar, Q=5 l/min)	Adjust. range (bar)	Pressure increase (bar/turn)
MT000011	MTTP-003-TLSN-01-G14-N006	P,Pii,T: G1/4"	6	6-55	12