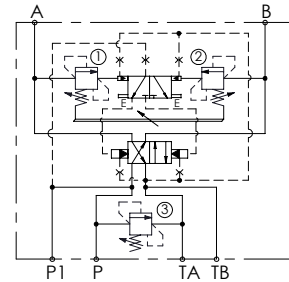
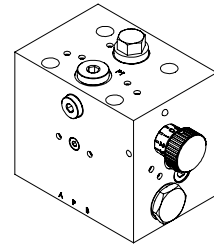
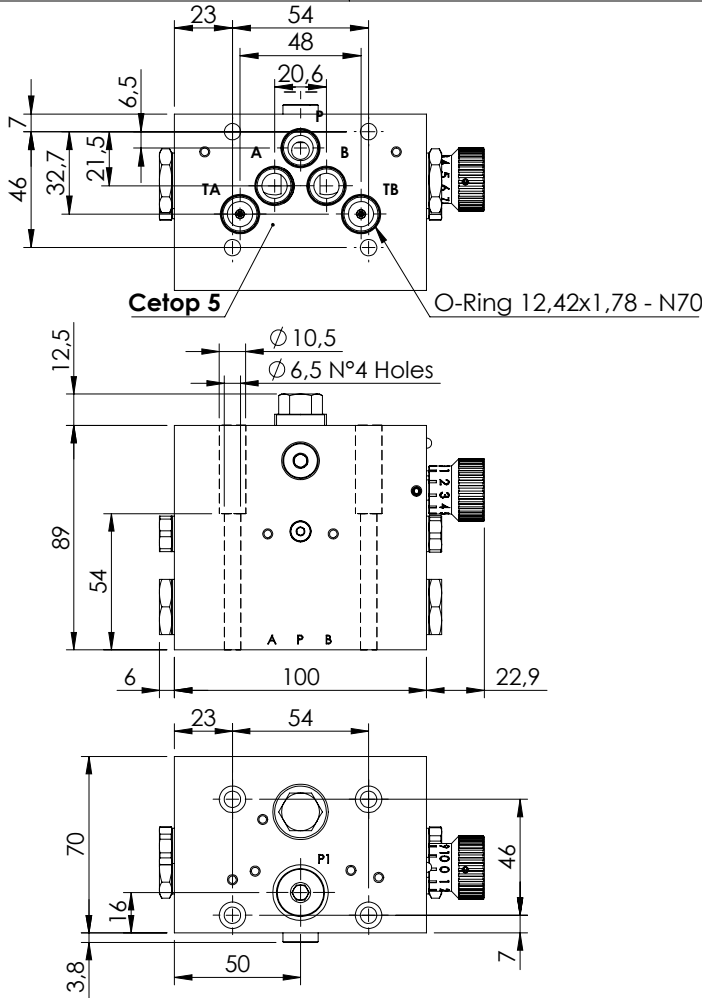


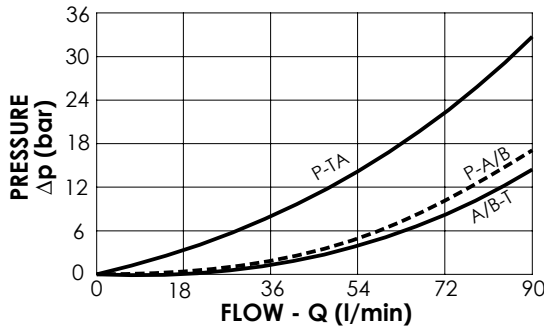
AUTOMATIC DIRECTIONAL VALVE

MDAP-090-NNNR PRESSURE SWITCHING



SPECIFICATIONS

Max. operating pressure:	350 bar
Rated flow:	90 l/min
Manifold:	Cast Iron
Weight:	4,45 kg



NOTES

Minimum required flow: 3 l/min

ORDERING CODES

Quick code	Description	Main ports size	Standard setting (bar, Q=5 l/min)	Adjust. range (bar)	Pressure increase (bar/turn)
MD000119	MDAP-090-NNNR-NP-N10-N350	A,B,P,TA,TB: CETOP 5 P1: G 1/4"	① ② 180 ③ 200	① ② 140-350	① ② 146
				Fix setting	