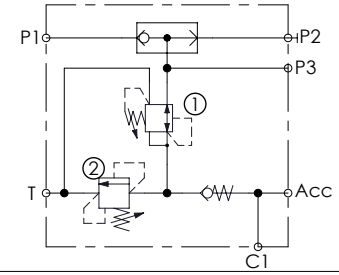
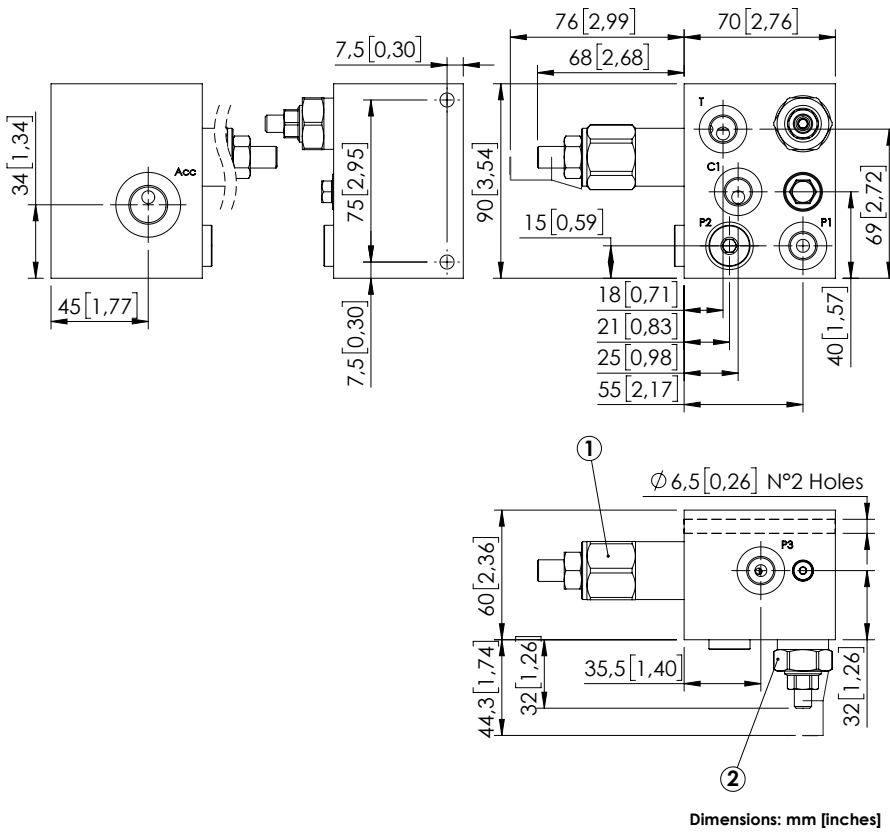


BPRD-010-ALLS

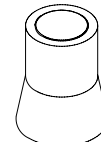


SPECIFICATIONS

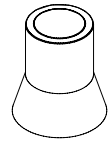
Max. operating pressure:	350 bar (5000 psi)
Rated flow:	10 l/min (3 gpm)
Weight:	3 kg (6,6 lbs)
Manifold:	Steel
Contamination class to ISO 4406:	See technical spec.
MTF _d :	150 years

NOTES

SEALING CAP

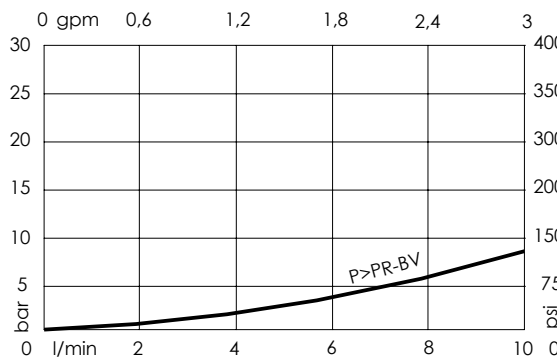


Ordering code:
AT000020
(Valve n°2)



Ordering code:
AT000021
(Valve n°1)

CURVES



ORDERING CODES

Quick code	Description	Ports	Standard setting Q=5 l/min (1,3 gpm)	Setting range	Pressure increase bar/turn (psi/turn)
BP000113	BPRD-010-ALLS-NP-G14-N350	P1,P2,P3,C1,T: G 1/4" Acc: M18x1,5	① 35 bar (500 psi) ② 50 bar (700 psi)	① 10-50 bar (150-700 psi) ② 10-70 bar (150-1000 psi)	① 7 (100) ② 26 (400)