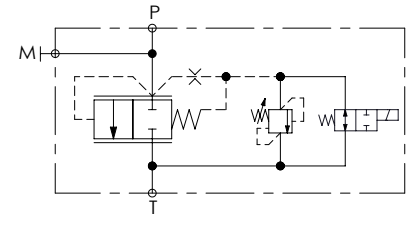
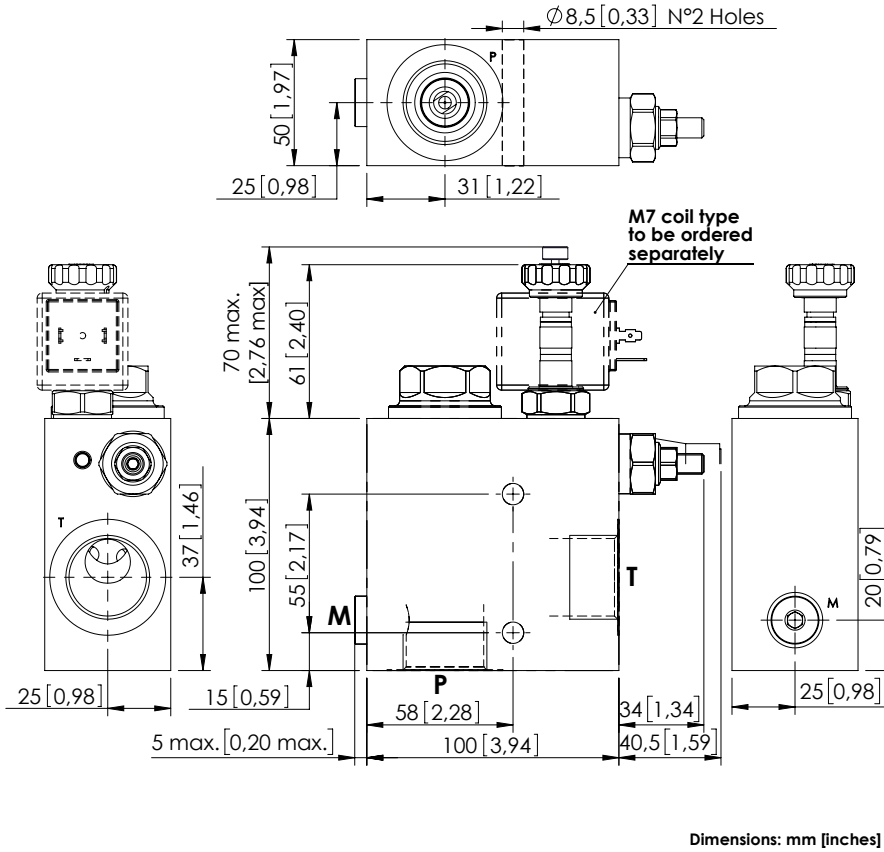


UNLOADING VALVE

MFTS-200-DHAN

SOLENOID OPERATED
UNLOADING VALVE
WITH RELIEF



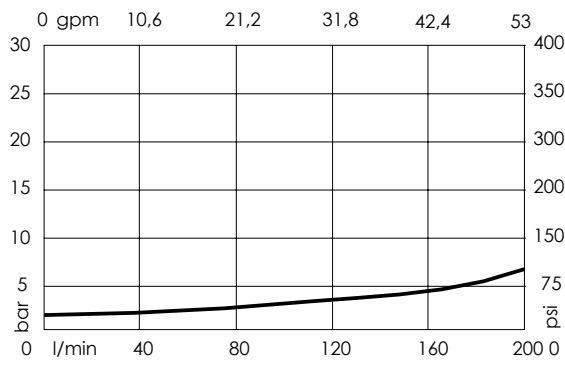
SPECIFICATIONS

Max. operating pressure:	250 bar (3600 psi)
Rated flow:	200 l/min (53 gpm)
Manifold:	Aluminium
Weight:	1,65 kg (3,7 lbs)
Internal leakage:	80 cm ³ /min (4,88 in ³ /min)
Coil type:	M7
Contamination class to ISO 4406:	See technical spec.
MTTFd:	150 years

NOTES

Available in steel version for 350 bar (5000 psi) maximum operating pressure.
See chapter 18.00.000 for coil.

CURVES



ORDERING CODES

Quick code	Description	Ports	Standard setting Q=5 l/min (1,3 gpm)	Adjustment range	Pressure increase	Options
MF000039	MFTS-200-DHAN-NP-G10-N250	P,T: G 1" M: G 1/4"	200 bar (2900 psi)	140-350 bar (2000-5000 psi)	142 bar/turn (2000 psi/turn)	Standard
MF000043	MFTS-200-DHAE-NP-G10-N250	P,T: G 1" M: G 1/4"	200 bar (2900 psi)	140-350 bar (2000-5000 psi)	142 bar/turn (2000 psi/turn)	Push style override