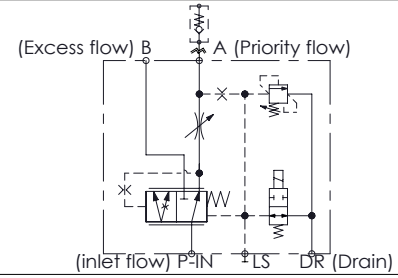
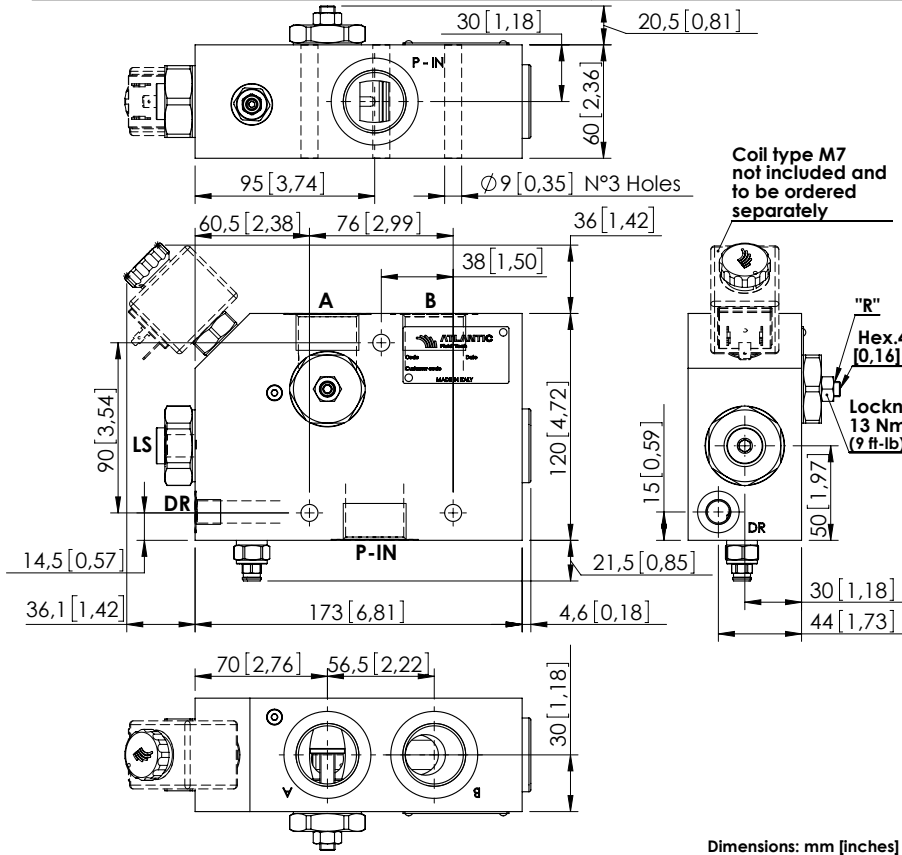


FLOW REGULATOR

MFPT-300-MHAR

**PRESSURE COMPENSATED
PRIORITY
FLOW REGULATOR FOR
AUXILIARY CIRCUITS**



SPECIFICATIONS

Max. operating pressure:	350 bar (5000 psi)
Rated flow:	300 l/min (79 gpm)
Regulated flow:	1,5-220 l/min (0,3-58 gpm)
Manifold:	Steel
Weight:	8,78 kg (19,4 lbs)
Contamination class to ISO 4406:	See technical spec.
MTF _d :	150 years

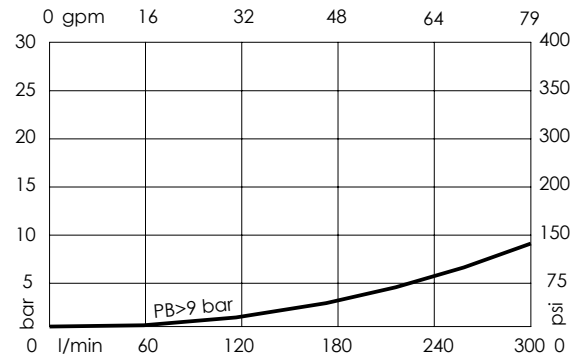
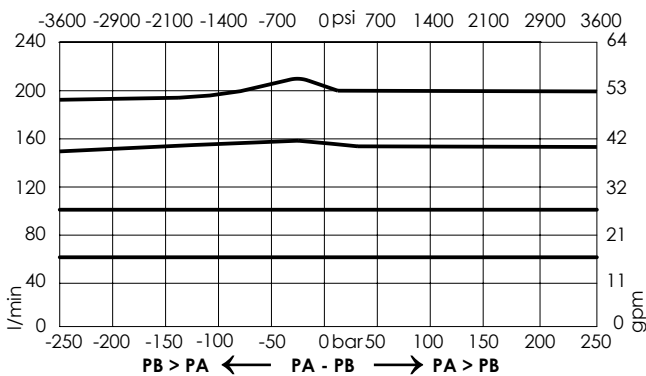
NOTES

Turn screw "R" anti-clockwise to increase regulated flow.
Drain flow from T, when de-energized, up to 1,5 l/min (0,4 gpm).

Max back pressure admitted on "DR" line 1,5 bar (21 psi).
For correct operation 8-9 bar (110-130 psi) must be present in port A. For open centre or low pressure systems a 9 bar (130 psi) check valve should be fitted in port A.
Spool switching can be influenced by flexing or stressing the valve body. It is recommended to fit spacers on the mounting bolts between the valve and the mounting surface.

See chapter four for suitable check valves.

CURVES



ORDERING CODES

Quick code	Description	Ports	Standard setting	Adjustment range	Pressure increase
MF000057	MFPT-300-MHAR-22-G10-V210	P-IN,A,B: G 1" DR,LS: G 1/4"	200 bar (2900 psi)	100-200 bar (1500-2900 psi)	75 bar/turn (1100 psi/turn)
MF000058	MFPT-300-MHAR-22-G10-V350	P-IN,A,B: G 1" DR,LS: G 1/4"	350 bar (5000 psi)	150-350 bar (2100-5000 psi)	165 bar/turn (2300 psi/turn)