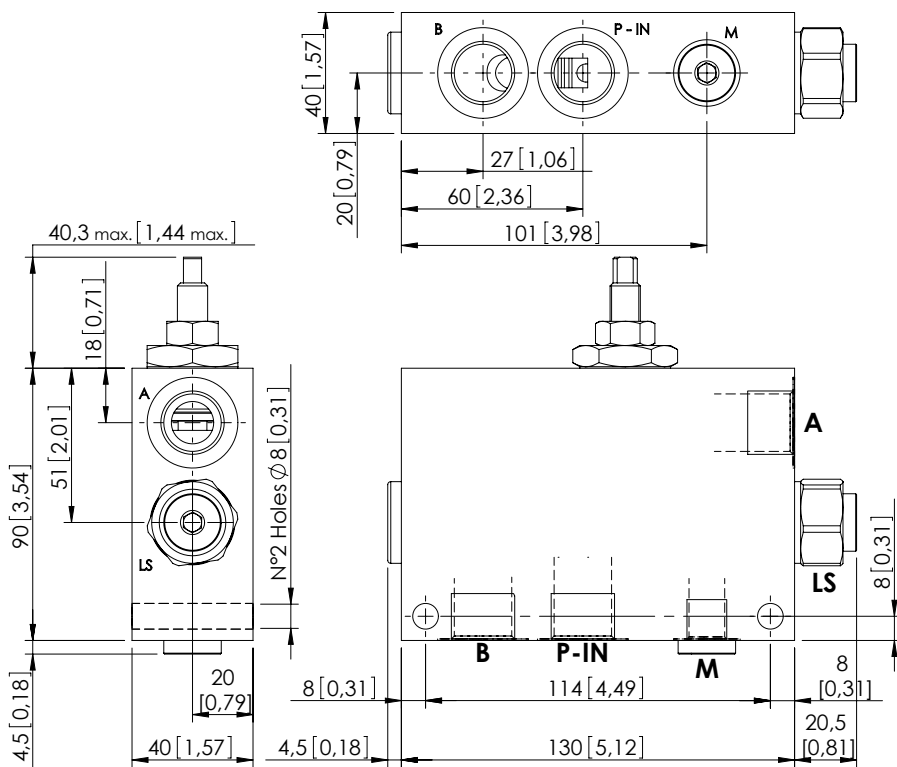
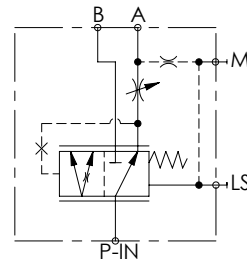


MFPT-100-RHAR

PRESSURE COMPENSATED
PRIORITY FLOW REGULATOR



Dimensions: mm [inches]



SPECIFICATIONS

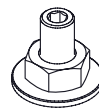
Max. operating pressure:	See table
Rated flow:	See table
Weight:	3,38 kg (7,5 lbs)
Contamination class to ISO 4406:	See technical spec.
MTF _d :	150 years

NOTES

For correct operation 8-9 bar (110-130 psi) must be present in port A. For open centre or low pressure systems a 9 bar (130 psi) check valve should be fitted in port A, see page 61.

Spool switching can be influenced by flexing or stressing the valve body. It is recommended to fit spacers on the mounting bolts between the valve and the mounting surface. For options see pag. 22.00.000

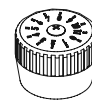
OPTIONS



Screw and locknut

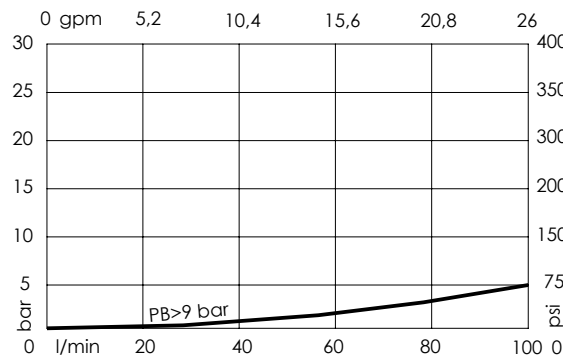
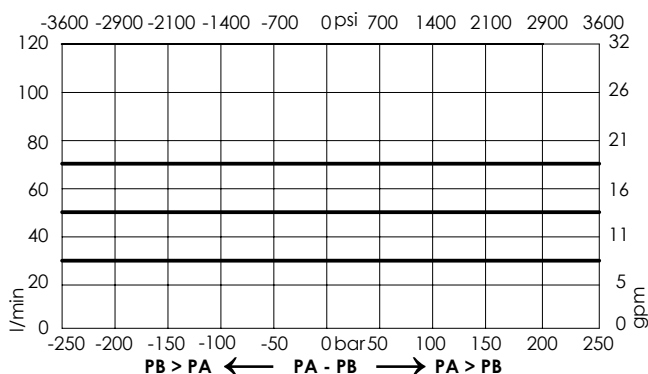


Handknob and locknut



Graduated handknob

CURVES



ORDERING CODES

Quick code	Description	Ports	Manifold	Max. pressure	Max. inlet flow	Max. regulated flow	Options
MF000069	MFPT-100-RHAR-85-G12-N350	P-IN,A,B: G 1/2" LS,M: G 1/4"	Steel	350 bar (5000 psi)	100 l/min (26 gpm)	85 l/min (22 gpm)	Screw and locknut