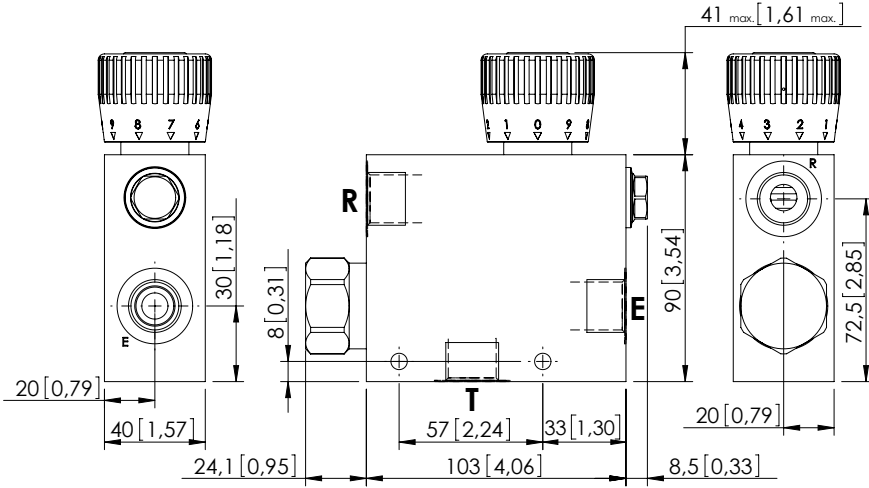
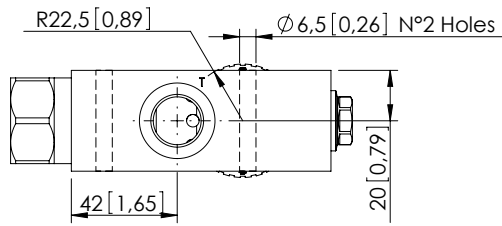


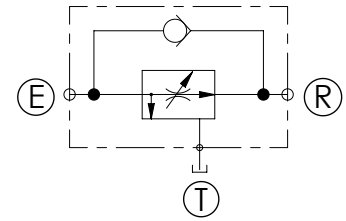
FLOW REGULATOR

# MFCT-090-VPZR

3 WAYS COMPENSATED  
WITH CHECK VALVE



Dimensions: mm [inches]

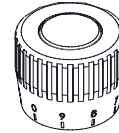


## SPECIFICATIONS

Max. operating pressure:	See table
Rated flow:	See table
Weight:	1,4 kg (3 lbs)
Contamination class to ISO 4406:	See technical spec.
MTF <sub>d</sub> :	150 years

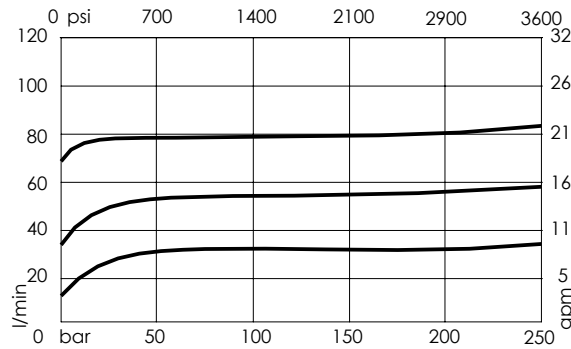
## NOTES

## OPTIONS



Graduated knob  
for flow regulation  
under pressure

## CURVES



## ORDERING CODES

Quick code	Description	Ports	Manifold	Max. pressure	Max. inlet flow	Regulated flow range	Options
MF000202	MFCT-090-VPZR-06-G12-N210	E,R,T: G 1/2"	Aluminium	210 bar (3000 psi)	90 l/min (24 gpm)	0-6 l/min (0-1.5 gpm)	Graduated knob
MF000203	MFCT-090-VPZR-12-G12-N210	E,R,T: G 1/2"	Aluminium	210 bar (3000 psi)	90 l/min (24 gpm)	0-12 l/min (0-3 gpm)	Graduated knob
MF000204	MFCT-090-VPZR-25-G12-N210	E,R,T: G 1/2"	Aluminium	210 bar (3000 psi)	90 l/min (24 gpm)	0-25 l/min (7 gpm)	Graduated knob
MF000205	MFCT-090-VPZR-32-G12-N210	E,R,T: G 1/2"	Aluminium	210 bar (3000 psi)	90 l/min (24 gpm)	0-32 l/min (0-9 gpm)	Graduated knob
MF000206	MFCT-090-VPZR-50-G12-N210	E,R,T: G 1/2"	Aluminium	210 bar (3000 psi)	90 l/min (24 gpm)	0-50 l/min (0-13 gpm)	Graduated knob
MF000207	MFCT-090-VPZR-63-G12-N210	E,R,T: G 1/2"	Aluminium	210 bar (3000 psi)	90 l/min (24 gpm)	0-63 l/min (0-17 gpm)	Graduated knob
MF000208	MFCT-090-VPZR-70-G12-N210	E,R,T: G 1/2"	Aluminium	210 bar (3000 psi)	90 l/min (24 gpm)	0-70 l/min (0-19 gpm)	Graduated knob
MF000209	MFCT-090-VPZR-80-G12-N210	E,R,T: G 1/2"	Aluminium	210 bar (3000 psi)	90 l/min (24 gpm)	0-80 l/min (0-21 gpm)	Graduated knob