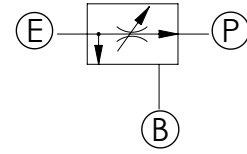
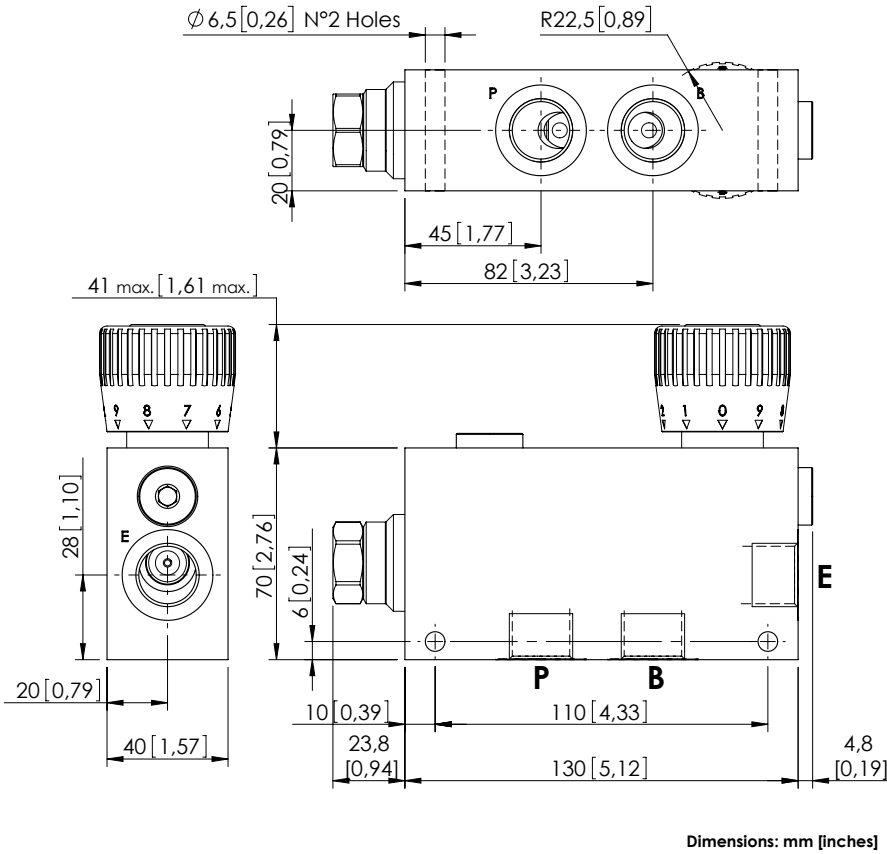


FLOW REGULATOR

MFPT-090-RPZR

PRESSURE COMPENSATED
PRIORITY FLOW REGULATOR

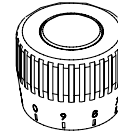


SPECIFICATIONS

Max. operating pressure:	See table
Rated flow:	See table
Weight:	1,3 kg (2,8 lbs)
Contamination class to ISO 4406:	See technical spec.
MTF _d :	150 years

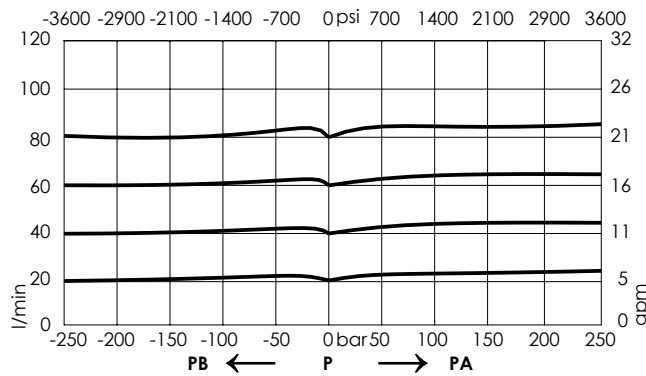
NOTES

OPTIONS



Graduated handknob
for flow regulation
under pressure

CURVES



ORDERING CODES

Quick code	Description	Ports	Manifold	Max. pressure	Max. inlet flow	Regulated flow range	Options
MF000211	MFPT-090-RPZR-12-G12-N210	P,B,E: G 1/2"	Aluminium	210 bar (3000 psi)	90 l/min (24 gpm)	0-12 l/min (0-3 gpm)	Graduated handknob
MF000212	MFPT-090-RPZR-25-G12-N210	P,B,E: G 1/2"	Aluminium	210 bar (3000 psi)	90 l/min (24 gpm)	0-25 l/min (7 gpm)	Graduated handknob
MF000213	MFPT-090-RPZR-32-G12-N210	P,B,E: G 1/2"	Aluminium	210 bar (3000 psi)	90 l/min (24 gpm)	0-32 l/min (0-9 gpm)	Graduated handknob
MF000214	MFPT-090-RPZR-50-G12-N210	P,B,E: G 1/2"	Aluminium	210 bar (3000 psi)	90 l/min (24 gpm)	0-50 l/min (0-13 gpm)	Graduated handknob
MF000215	MFPT-090-RPZR-63-G12-N210	P,B,E: G 1/2"	Aluminium	210 bar (3000 psi)	90 l/min (24 gpm)	0-63 l/min (0-17 gpm)	Graduated handknob
MF000216	MFPT-090-RPZR-70-G12-N210	P,B,E: G 1/2"	Aluminium	210 bar (3000 psi)	90 l/min (24 gpm)	0-70 l/min (0-19 gpm)	Graduated handknob
MF000217	MFPT-090-RPZR-80-G12-N210	P,B,E: G 1/2"	Aluminium	210 bar (3000 psi)	90 l/min (24 gpm)	0-80 l/min (0-21 gpm)	Graduated handknob