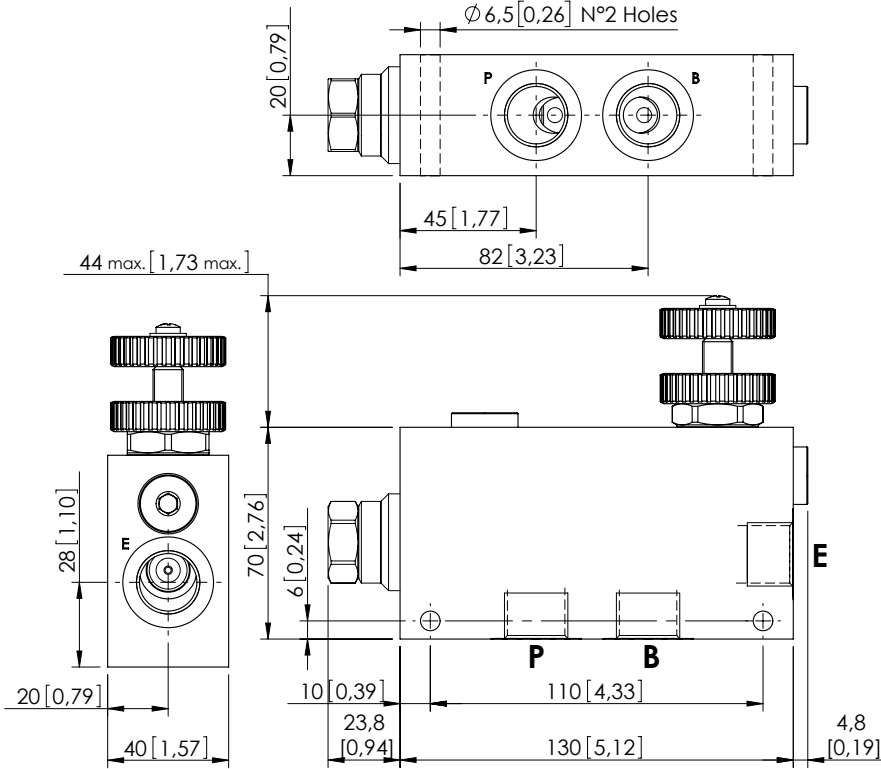
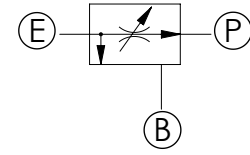


# MFPT-090-RVTR

PRESSURE COMPENSATED  
PRIORITY FLOW REGULATOR



Dimensions: mm [inches]



## SPECIFICATIONS

Max. operating pressure:	See table
Rated flow:	See table
Weight:	1,2 kg (2,6 lbs)
Contamination class to ISO 4406:	See technical spec.
MTF <sub>d</sub> :	150 years

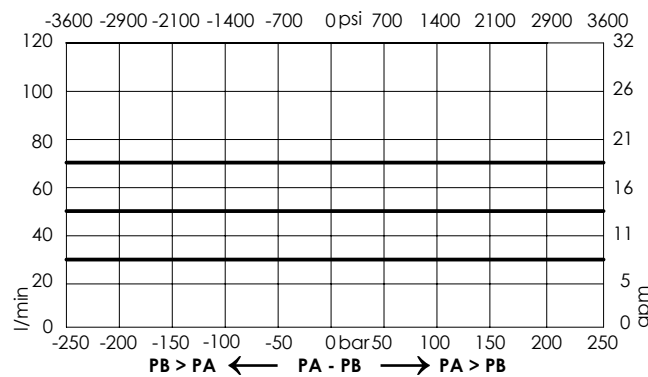
## NOTES

## OPTIONS



Handknob  
and locknut

## CURVES



## ORDERING CODES

Quick code	Description	Ports	Manifold	Max. pressure	Max. inlet flow	Max. regulated flow	Options
MF000121	MFPT-090-RVTR-70-G12-N210	E,P,T: G 1/2"	Aluminium	210 bar (3000 psi)	90 l/min (24 gpm)	70 l/min (19 gpm)	Handknob and locknut
MF000136	MFPT-090-RVTR-70-G38-N210	E,P,T: G3/8"	Aluminium	210 bar (3000 psi)	90 l/min (24 gpm)	70 l/min (19 gpm)	Handknob and locknut