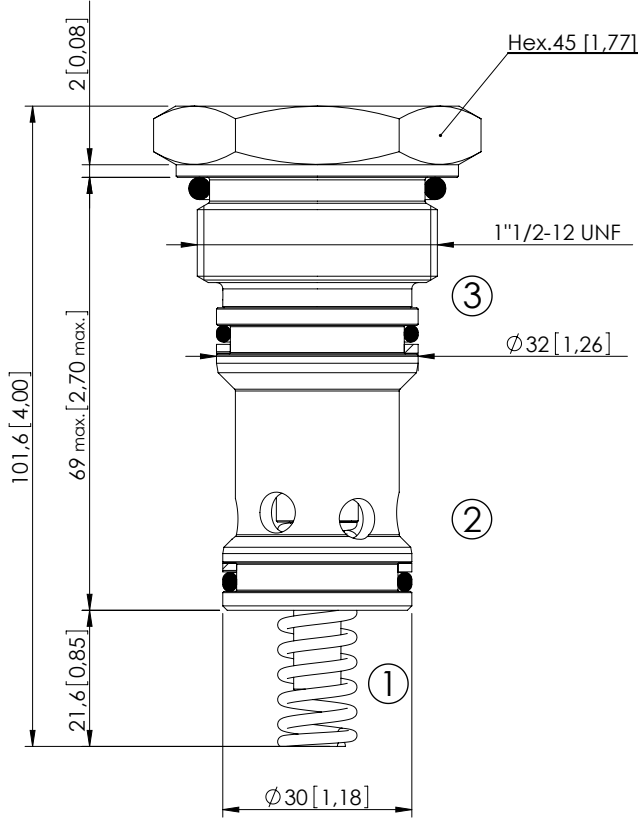
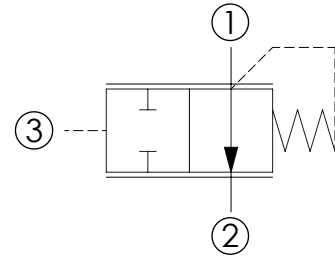


CDLN-200-SBPE

NORMALLY OPEN
SPOOL TYPE



Dimensions: mm [inches]



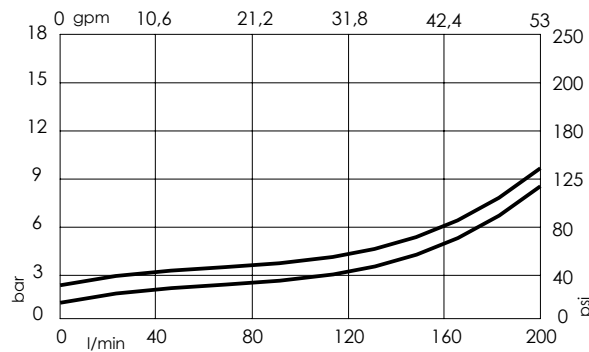
SPECIFICATIONS

Max. operating pressure:	350 bar (5000 psi)
Rated flow:	200 l/min (53 gpm)
Cavity:	VP000204
Weight:	0,5 kg (1,1 lbs)
Spool:	Ø19 mm [0,75]
Installation torque:	280 - 300 Nm (207 - 221 ft-lb)
Seal kit:	RC700204
Contamination class to ISO 4406:	See technical spec.
MTTFa:	150 years

NOTES

Parts in body compensator

CURVES



ORDERING CODES

Quick code	Description	Closing pressure
CD000080	CDLN-200-SBPE-01-204-N001	1 bar (15 psi)
CD000286	CDLN-200-SBPE-01-204-N002	2 bar (30 psi)