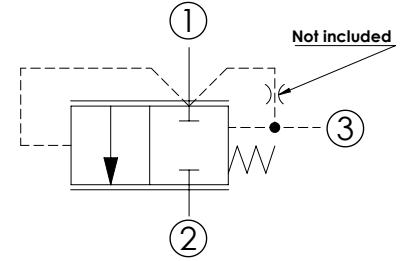
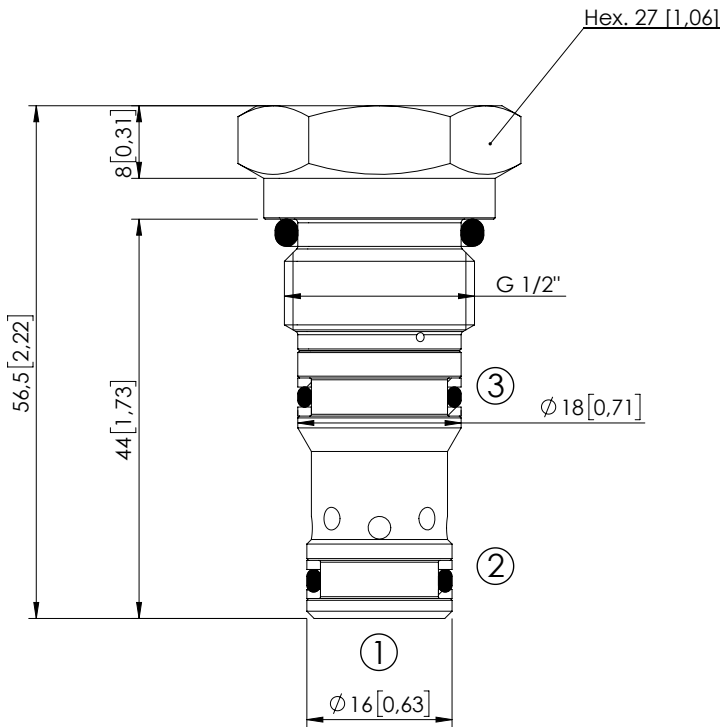


CDLN-100-SCPD

NORMALLY CLOSED
SPOOL TYPE
WITH INTERNAL ORIFICE



SPECIFICATIONS

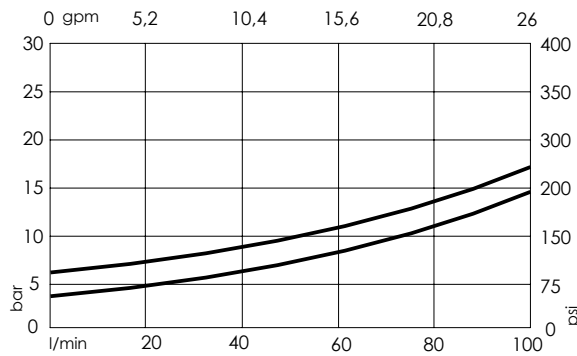
Max. operating pressure:	350 bar (5000 psi)
Rated flow:	100 l/min (26 gpm)
Cavity:	VP000198
Weight:	0,11 kg (0,24 lbs)
Spool:	$\phi 10$ mm [0,39]
Installation torque:	75 - 85 Nm (55 - 63 ft-lb)
Internal orifice:	M5 thread
Seal kit:	RD700198
Contamination class to ISO 4406:	See technical spec.
MTTF _d :	150 years

Dimensions: mm [inches]

NOTES

Parts in body compensator

CURVES



ORDERING CODES

Quick code	Description	Cracking pressure
CD000216	CDLN-100-SCPD-13-198-N003	3 bar (50 psi)
CD000215	CDLN-100-SCPD-13-198-N006	6 bar (90 psi)
CD000220	CDLN-100-SCPD-13-198-N012	12 bar (170 psi)
CD000238	CDLN-100-SCPD-13-198-N016	16 bar (240 psi)