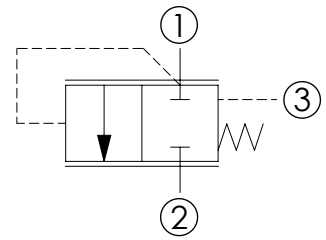
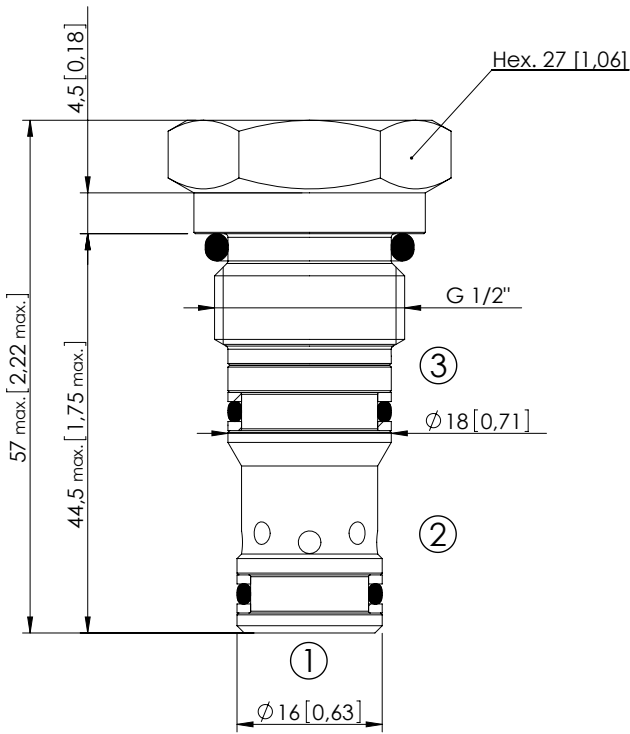


CDLN-100-SCPC

NORMALLY CLOSED
SPOOL TYPE



SPECIFICATIONS

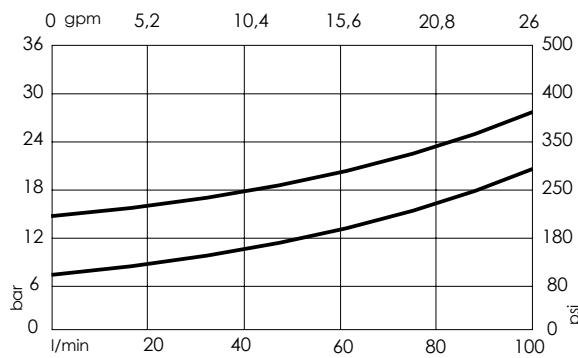
Max. operating pressure:	350 bar (5000 psi)
Rated flow:	100 l/min (26 gpm)
Cavity:	VP000198
Weight:	0,12 kg (0,27 lbs)
Spool:	Ø10 mm [0,39]
Installation torque:	75 - 85 Nm (55 - 63 ft-lb)
Seal kit:	RD700198
Contamination class to ISO 4406:	See technical spec.
MTTFa:	150 years

Dimensions: mm [inches]

NOTES

Parts in body compensator

CURVES



ORDERING CODES

Quick code	Description	Cracking pressure
CD000073	CDLN-100-SCPC-14-198-N006	6 bar (80 psi)
CD000103	CDLN-100-SCPC-14-198-N012	12 bar (180 psi)