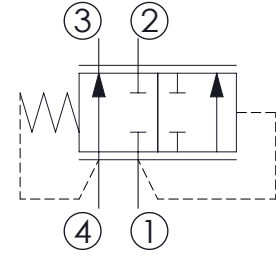
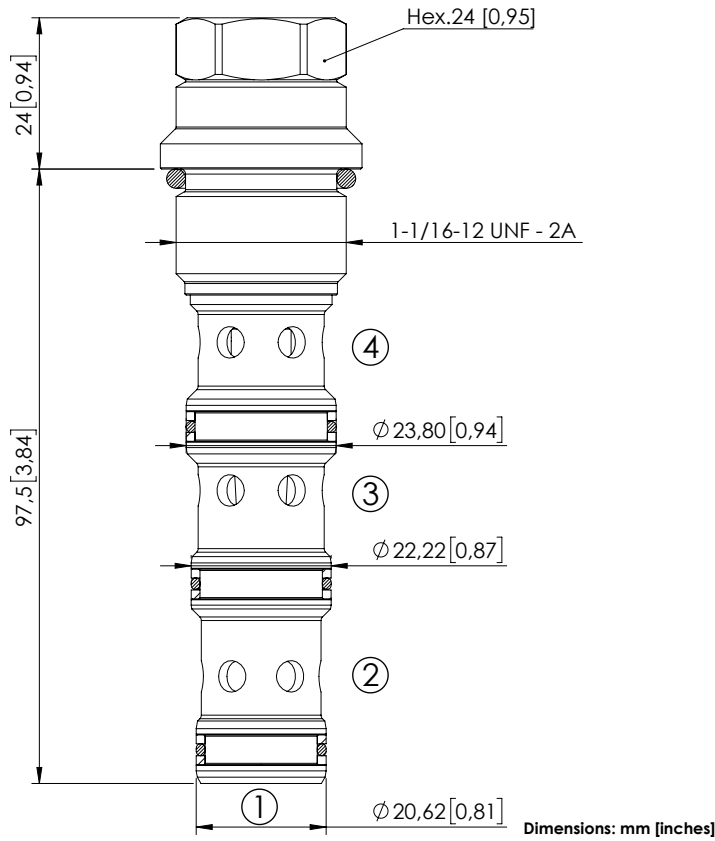


# CDLN-120-CDPB

DIRECT ACTING  
SPOOL TYPE

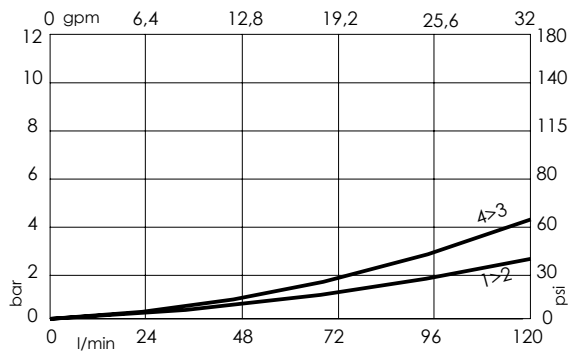


## SPECIFICATIONS

|                                  |                              |
|----------------------------------|------------------------------|
| Max. operating pressure:         | 350 bar (5000 psi)           |
| Rated flow:                      | 120 l/min (32 gpm)           |
| Cavity:                          | SAE-12-4N                    |
| Weight:                          | 0,3 kg (0,69 lbs)            |
| Installation torque:             | 110 - 120 Nm (81 - 86 ft-lb) |
| Seal kit:                        | RB700103                     |
| Contamination class to ISO 4406: | See technical spec.          |
| MTTF <sub>d</sub> :              | 150 years                    |

## NOTES

## CURVES



## ORDERING CODES

| Quick code | Description               | Cracking pressure |
|------------|---------------------------|-------------------|
| CD000336   | CDLN-120-CDPB-FH-S12-N010 | 10 bar (150 psi)  |
|            |                           |                   |
|            |                           |                   |
|            |                           |                   |
|            |                           |                   |