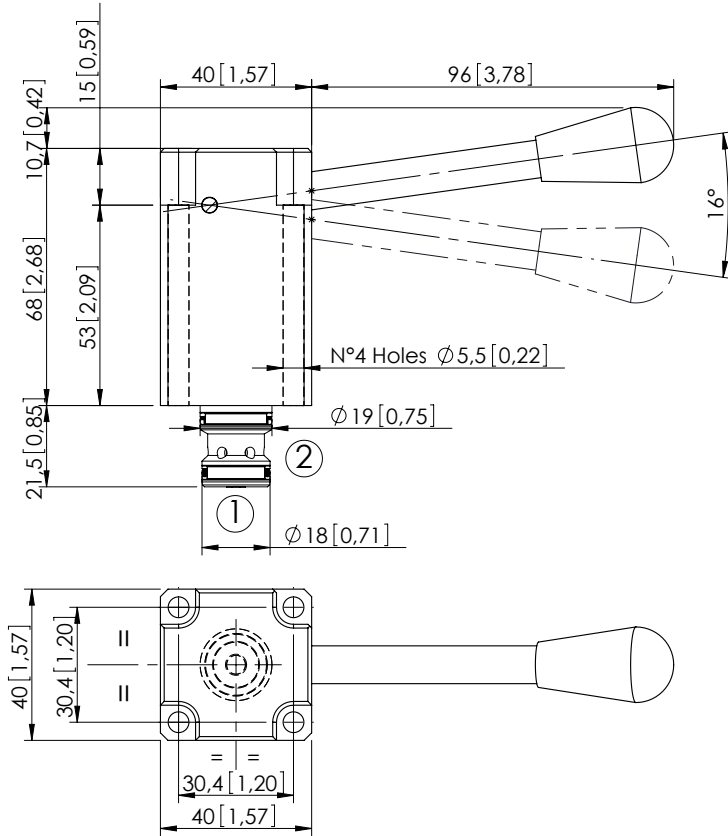


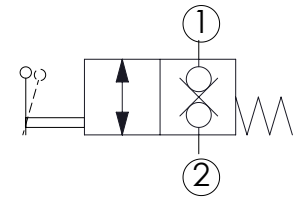
CARTRIDGE SEAT VALVE

# CDML-040-LBVD

BIDIRECTIONAL SEAT-VALVE SHUT OFF  
DIRECT ACTING  
MANUALLY OPERATED



Dimensions: mm [inches]



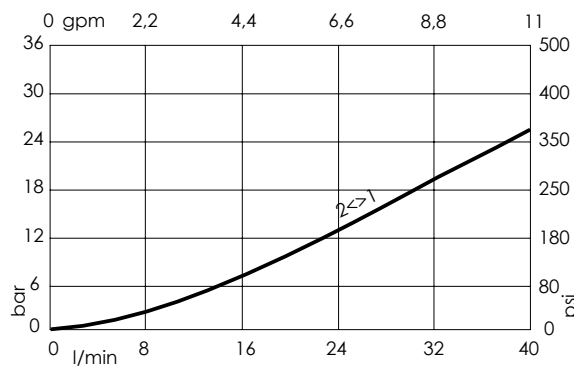
## SPECIFICATIONS

Max. operating pressure:	350 bar (5000 psi)
Rated flow:	40 l/min (11 gpm)
Manifold:	Steel
Weight:	0,8 kg (1,76 lbs)
Cavity:	VP000338
Seal kit:	RD700338
Contamination class to ISO 4406:	See technical spec.
MTTF <sub>d</sub> :	150 years

## NOTES

To be mounted with M5 x 60 bolt.  
Installation torque: 5 Nm (4 ft-lb).

## CURVES



## ORDERING CODES

Quick code	Description
CD000234	CDML-040-LBVD-00-338-N350