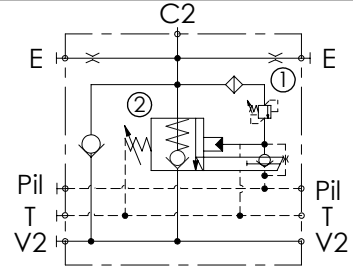
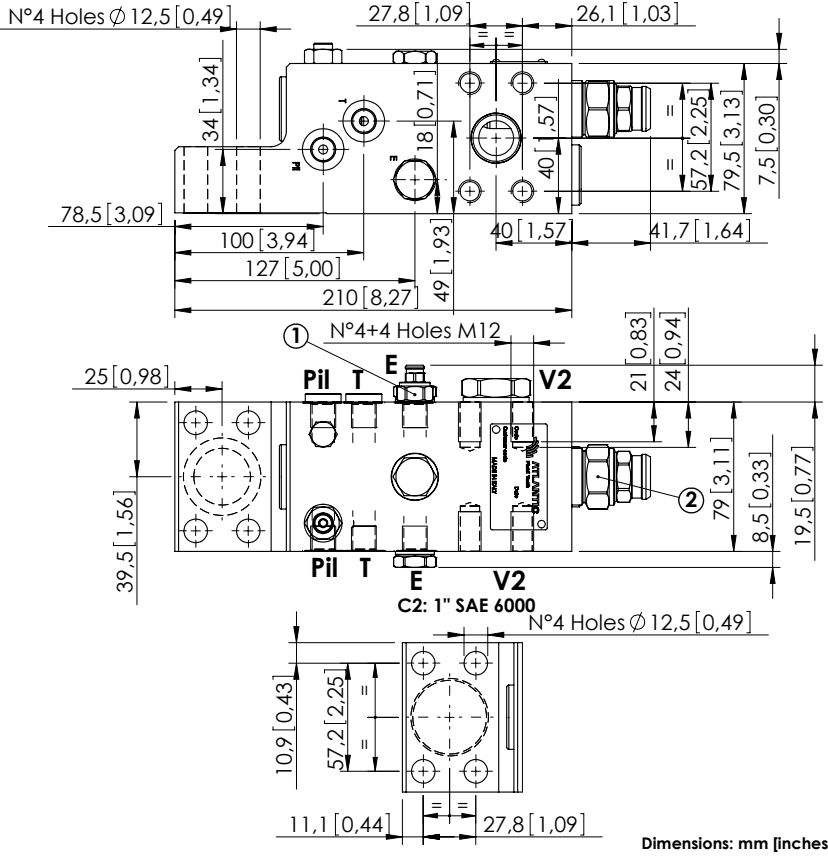


CHECK AND METERING VALVE

MLST-200-AAGN

FLANGED TYPE
1" SAE 6000



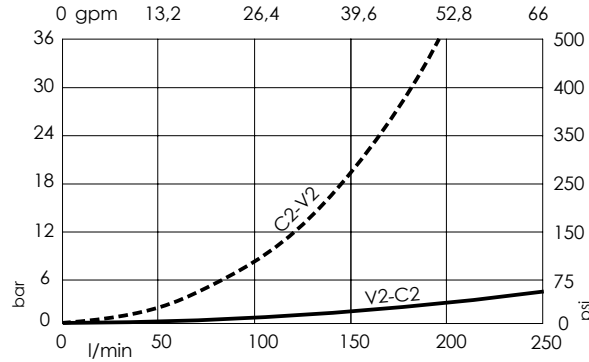
SPECIFICATIONS

Max. operating pressure:	420 bar (6000 psi)
Rated flow:	250 l/min (66 gpm)
Manifold:	Steel
Weight:	8,01 kg (17,66 lbs)
Contamination class to ISO 4406:	See technical spec.
MTF _a :	150 years

NOTES

When correctly adjusted for the specific excavator installation, these valves meet the requirement of ISO 8643.

CURVES



ORDERING CODES

Quick code	Description	Main ports size	Standard setting	Adjustment range	Pressure increase
ML000138	MLLT-200-AAGR-00-S10-N420	V2,C2: 1" SAE 6000 E,P11,T: G 1/4"	① 350 bar @5 l/min (5000 psi @1,3 gpm) ② 7.5 bar (100 psi) Crack. pr.	① 150-420 bar (2100-6000 psi) ② 3-15 bar (50-200 psi)	① 236 bar/turn (3400 psi/turn) ② 5 bar/turn (70 psi/turn)