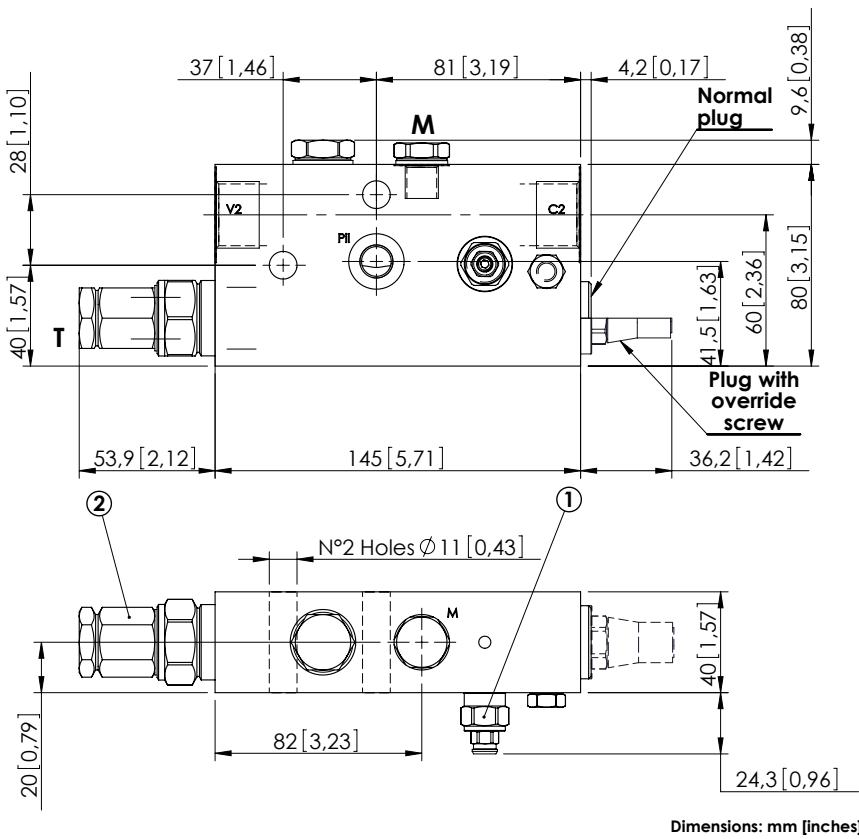


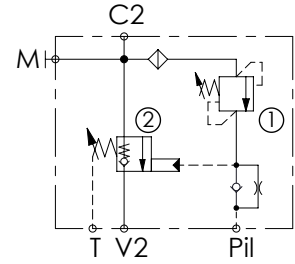
CHECK AND METERING VALVE

# MLST-150-ALGL

IN LINE VERSION  
LEFT VERSION



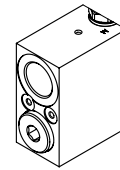
Dimensions: mm [inches]



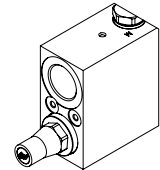
### SPECIFICATIONS

|                                  |                     |
|----------------------------------|---------------------|
| Max. operating pressure:         | 420 bar (6000 psi)  |
| Rated flow:                      | 150 l/min (40 gpm)  |
| Manifold:                        | Steel               |
| Weight:                          | 3,35 kg (7,39 lbs)  |
| Contamination class to ISO 4406: | See technical spec. |
| MTTFa:                           | 150 years           |

### OPTIONS



Plug with override screw

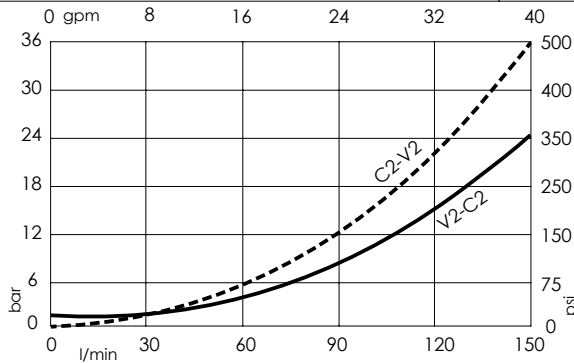


Normal plug

### NOTES

When correctly adjusted for the specific excavator installation, these valves meet the requirement of ISO 8643.

### CURVES



### ORDERING CODES

| Quick code | Description               | Main ports size   | Plug with override screw | Standard setting   | Adjustment range   | Pressure increase   |
|------------|---------------------------|---|--------------------------|--|--|---|
| ML000121   | MLST-150-ALGL-00-G34-N420 | V2,C2: G 3/4"<br>Pii,T,M: G 1/4"                          | No                       | ① 350 bar @ 5 l/min (5000 psi @ 1,3 gpm)<br>② 7.5 bar (100 psi) Crack. pr. | ① 150-420 bar (2100-6000 psi)<br>② 3-15 bar (50-200 psi) | ① 236 bar/turn (3400 psi/turn)<br>② 8 bar/turn (100 psi/turn) |
| ML000010   | MLST-150-ALGL-00-G34-E420 | V2,C2: G 3/4"<br>Pii,T,M: G 1/4"                          | Yes                      | ① 350 bar @ 5 l/min (5000 psi @ 1,3 gpm)<br>② 7.5 bar (100 psi) Crack. pr. | ① 150-420 bar (2100-6000 psi)<br>② 3-15 bar (50-200 psi) | ① 236 bar/turn (3400 psi/turn)<br>② 8 bar/turn (100 psi/turn) |
| ML000124   | MLST-150-ALGL-00-U11-N420 | V2,C2: 1 1/16-12 UNF<br>Pii,T,M: 9/16-18 UNF<br>M: G 1/4" | No                       | ① 350 bar @ 5 l/min (5000 psi @ 1,3 gpm)<br>② 7.5 bar (100 psi) Crack. pr. | ① 150-420 bar (2100-6000 psi)<br>② 3-15 bar (50-200 psi) | ① 236 bar/turn (3400 psi/turn)<br>② 8 bar/turn (100 psi/turn) |
| ML000030   | MLST-150-ALGL-00-U11-E420 | V2,C2: 1 1/16-12 UNF<br>Pii,T,M: 9/16-18 UNF<br>M: G 1/4" | Yes                      | ① 350 bar @ 5 l/min (5000 psi @ 1,3 gpm)<br>② 7.5 bar (100 psi) Crack. pr. | ① 150-420 bar (2100-6000 psi)<br>② 3-15 bar (50-200 psi) | ① 236 bar/turn (3400 psi/turn)<br>② 8 bar/turn (100 psi/turn) |
| ML000125   | MLST-150-ALGL-00-J34-N420 | V2,C2: 3/4" JIS<br>Pii,T,M: 1/4" JIS                      | No                       | ① 350 bar @ 5 l/min (5000 psi @ 1,3 gpm)<br>② 7.5 bar (100 psi) Crack. pr. | ① 150-420 bar (2100-6000 psi)<br>② 3-15 bar (50-200 psi) | ① 236 bar/turn (3400 psi/turn)<br>② 8 bar/turn (100 psi/turn) |
| ML000104   | MLST-150-ALGL-00-J34-E420 | V2,C2: 3/4" JIS<br>Pii,T,M: 1/4" JIS                      | Yes                      | ① 350 bar @ 5 l/min (5000 psi @ 1,3 gpm)<br>② 7.5 bar (100 psi) Crack. pr. | ① 150-420 bar (2100-6000 psi)<br>② 3-15 bar (50-200 psi) | ① 236 bar/turn (3400 psi/turn)<br>② 8 bar/turn (100 psi/turn) |