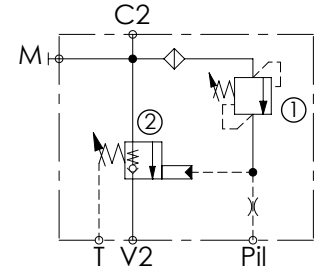
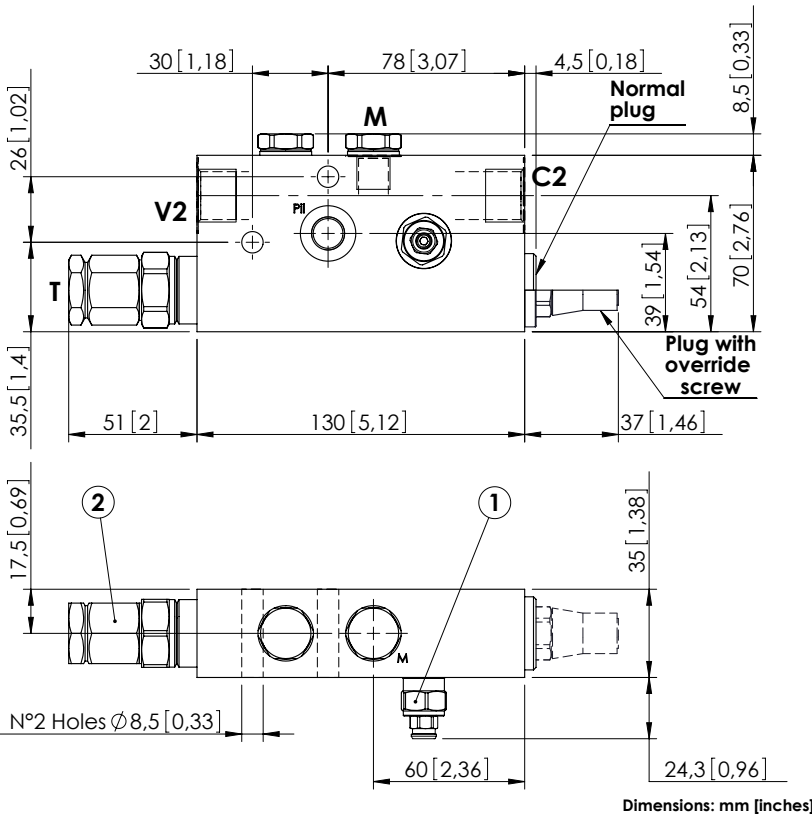


CHECK AND METERING VALVE

MLST-100-ALGL

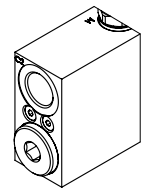
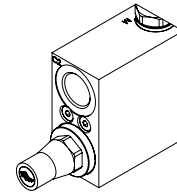
IN LINE VERSION
LEFT VERSION



SPECIFICATIONS

| | |
|----------------------------------|---------------------|
| Max. operating pressure: | 420 bar (6000 psi) |
| Rated flow: | 100 l/min (26 gpm) |
| Manifold: | Steel |
| Weight: | 2,39 kg (5,27 lbs) |
| Contamination class to ISO 4406: | See technical spec. |
| MTTFa: | 150 years |

OPTIONS



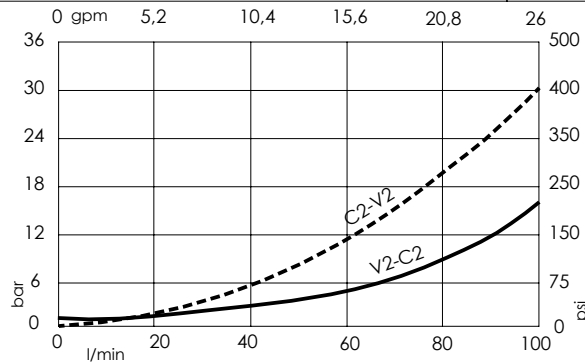
Plug with override screw

Normal plug

NOTES

When correctly adjusted for the specific excavator installation, these valves meet the requirement of ISO 8643.

CURVES



ORDERING CODES

| Quick code | Description | Main ports size | Plug with override screw | Standard setting | Adjustment range | Pressure increase |
|------------|---------------------------|--|--------------------------|---|---|---|
| ML000136 | MLST-100-ALGL-00-G12-N420 | V2,C2: G 1/2" Pil, T, M: G 1/4" | No | ① 350 bar @5 l/min (5000 psi @1,3 gpm) ② 7.5 bar (100 psi) Crack. pr. | ① 150-420 bar (2100-6000 psi) ② 3-15 bar (50-200 psi) | ① 236 bar/turn (3400 psi/turn) ② 7 bar/turn (100 psi/turn) |
| ML000149 | MLST-100-ALGL-00-G12-E420 | V2,C2: G 1/2" Pil, T, M: G 1/4" | Yes | ① 350 bar @5 l/min (5000 psi @1,3 gpm) ② 7.5 bar (100 psi) Crack. pr. | ① 150-420 bar (2100-6000 psi) ② 3-15 bar (50-200 psi) | ① 236 bar/turn (3400 psi/turn) ② 7 bar/turn (100 psi/turn) |
| ML000137 | MLST-100-ALGL-00-J12-N420 | V2,C2: JIS 1/2" Pil, T, M: JIS 1/4" | No | ① 350 bar @5 l/min (5000 psi @1,3 gpm) ② 7.5 bar (100 psi) Crack. pr. | ① 150-420 bar (2100-6000 psi) ② 3-15 bar (50-200 psi) | ① 236 bar/turn (3400 psi/turn) ② 7 bar/turn (100 psi/turn) |
| ML000150 | MLST-100-ALGL-00-J12-E420 | V2,C2: JIS 1/2" Pil, T, M: JIS 1/4" | Yes | ① 350 bar @5 l/min (5000 psi @1,3 gpm) ② 7.5 bar (100 psi) Crack. pr. | ① 150-420 bar (2100-6000 psi) ② 3-15 bar (50-200 psi) | ① 236 bar/turn (3400 psi/turn) ② 7 bar/turn (100 psi/turn) |