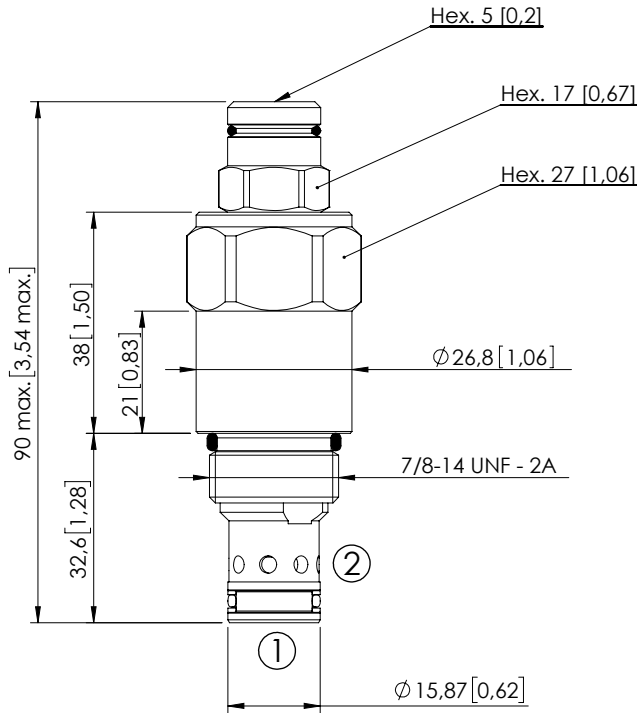
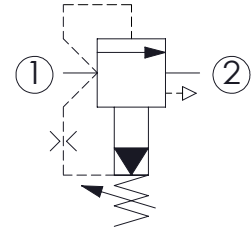


# CPLT-120-PSNA

PILOT OPERATED  
SPOOL TYPE  
COMPENSATED



Dimensions: mm [inches]

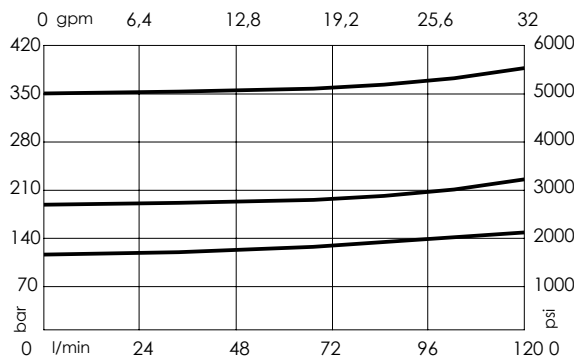


## SPECIFICATIONS

|                                  |  |
|----------------------------------|--|
| Max. operating pressure:         | 350 bar (5000 psi)   |
| Rated flow:                      | 120 l/min (32 gpm)   |
| Cavity:                          | SAE-10-2N  |
| Weight:                          | 0,25 kg (0,55 lbs)   |
| Contamination class to ISO 4406: | See technical spec.  |
| Seal kit:                        | RB700082   |
| Installation torque:             | 55 - 62 Nm (42 - 46 ft-lb)   |
| MTF <sub>d</sub> :               | 150 years  |
| Leakage:                         | 200 cm <sup>3</sup> /min @ 200 bar<br>12,2 in <sup>3</sup> /min @ 2800 psi |

## NOTES

## CURVES



## ORDERING CODES

| Quick code | Description               | Standard setting (cracking pressure) | Adjustment range            | Pressure increase            |
|------------|---------------------------|--------------------------------------|-----------------------------|------------------------------|
| CP000070   | CPLT-120-PSNA-HN-S10-N350 | 350 bar (5000 psi)                   | 140-350 bar (2000-5000 psi) | 114 bar/turn (1600 psi/turn) |
| CP000071   | CPLT-120-PSNA-HN-S10-N200 | 200 bar (2900 psi)                   | 70-210 bar (1000-3000 psi)  | 69 bar/turn (950 psi/turn)   |
| CP000072   | CPLT-120-PSNA-HN-S10-N100 | 100 bar (1400 psi)                   | 35-120 bar (500-1700 psi)   | 37 bar/turn (500 psi/turn)   |
|            |                           |                                      |                             |                              |
|            |                           |                                      |                             |                              |
|            |                           |                                      |                             |                              |