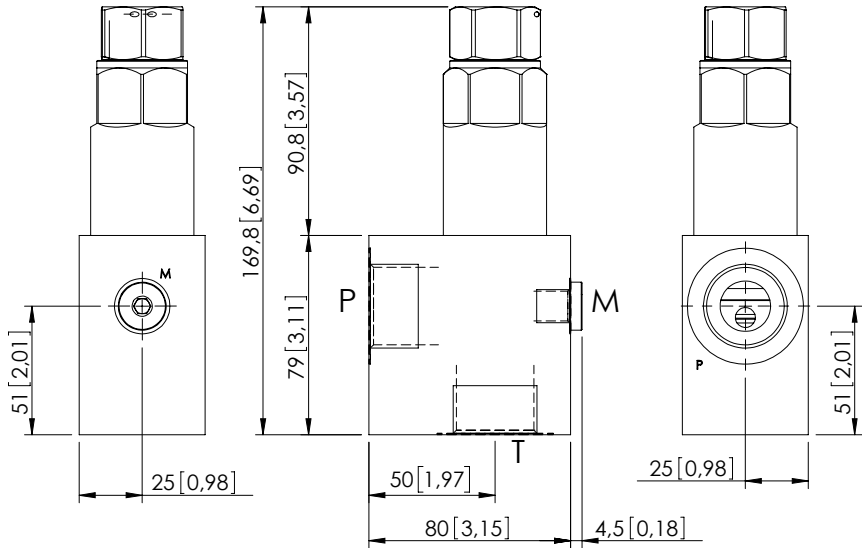
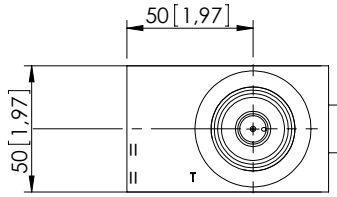


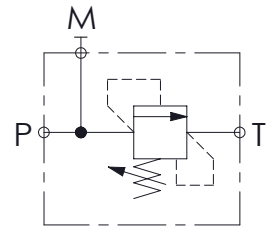
RELIEF VALVE IN BODY

# KPLN-250-DHGD

DIFFERENTIAL AREA  
POPPET TYPE



Dimensions: mm [inches]

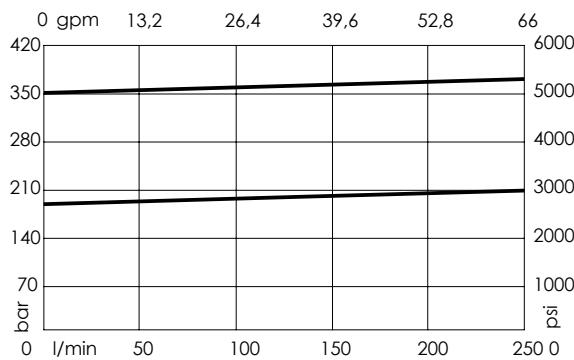


## SPECIFICATIONS

|                                  |                     |
|----------------------------------|---------------------|
| Max. operating pressure:         | 350 bar (5000 psi)  |
| Rated flow:                      | 250 l/min (66 gpm)  |
| Manifold:                        | Steel               |
| Weight:                          | 2,73 kg (6 lbs)     |
| Contamination class to ISO 4406: | See technical spec. |
| MTTFa:                           | 150 years           |

## NOTES

## CURVES



## ORDERING CODES

| Quick code | Description               | Main ports size         | Standard setting<br>Q=5 l/min (1.3 gpm) | Adjustment range            | Pressure increase          |
|------------|---------------------------|-------------------------|---|-----------------------------|----------------------------|
| KP000068   | KPLN-250-DHGD-HN-G10-N350 | P,T : G 1" ; M : G 1/4" | 350 bar (5000 psi)                      | 120-350 bar (1700-5000 psi) | 65 bar/turn (950 psi/turn) |
| KP000103   | KPLN-250-DHGD-HN-G10-N200 | P,T : G 1" ; M : G 1/4" | 200 bar (2900 psi)                      | 50-200 bar (700-2900 psi)   | 38 bar/turn (550 psi/turn) |
|            |                           |                         |   |                             |                            |
|            |                           |                         |   |                             |                            |
|            |                           |                         |   |                             |                            |