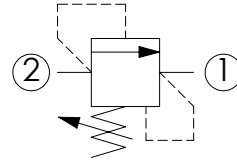
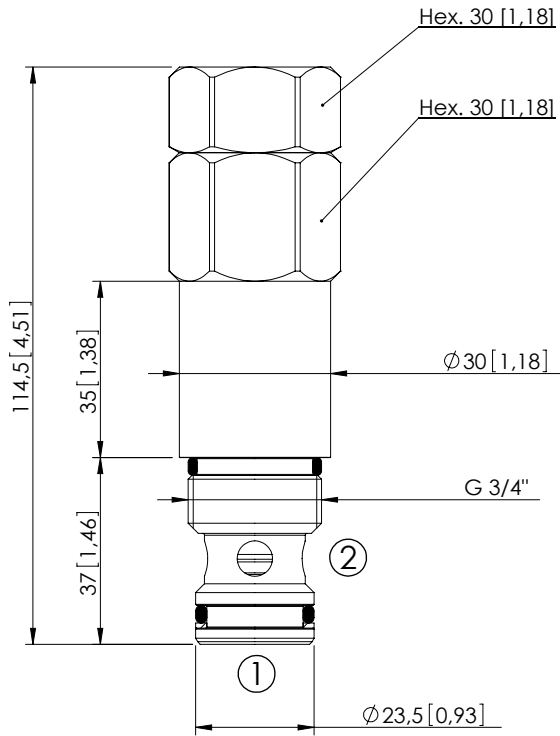


RELIEF VALVE

CPLN-150-DHGD

DIFFERENTIAL AREA
POPPET TYPE



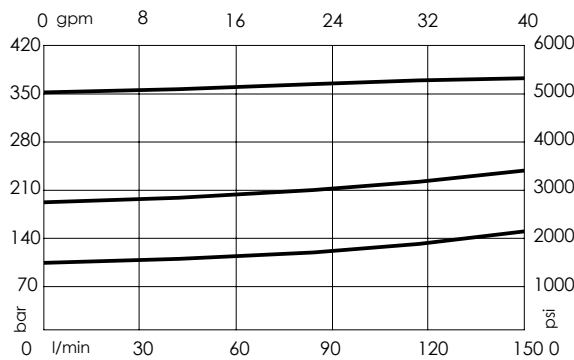
SPECIFICATIONS

Max. operating pressure:	350 bar (5000 psi)
Rated flow:	150 l/min (40 gpm)
Cavity:	VP000070
Weight:	0,48 kg (1,1 lbs)
Contamination class to ISO 4406:	See technical spec.
Seal kit:	RC700070
Installation torque:	110 - 130 Nm (81 - 96 ft-lb)
MTTF _d :	150 years

Dimensions: mm [inches]

NOTES

CURVES



ORDERING CODES

Quick code	Description	Standard setting (cracking pressure)	Adjustment range	Pressure increase
CP000022	CPLN-150-DHGD-HN-070-N350	350 bar (5000 psi)	130-350 bar (1900-5000 psi)	111 bar/turn (1600 psi/turn)
CP000018	CPLN-150-DHGD-HN-070-N200	200 bar (2900 psi)	70-210 bar (1000-3000 psi)	73 bar/turn (1000 psi/turn)
CP000021	CPLN-150-DHGD-HN-070-N100	100 bar (1400 psi)	30-100 bar (400-1400 psi)	32 bar/turn (450 psi/turn)