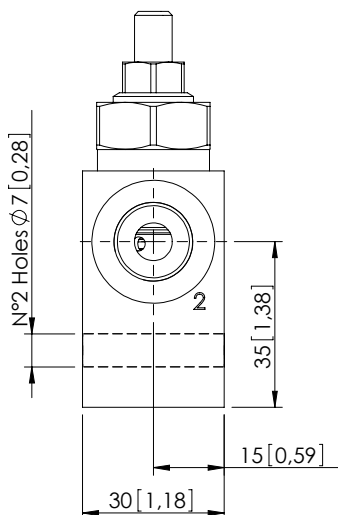
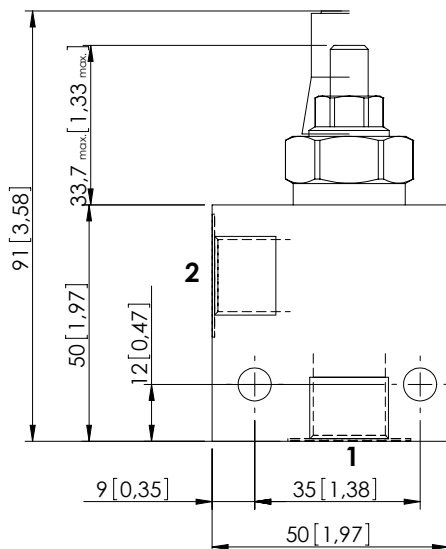
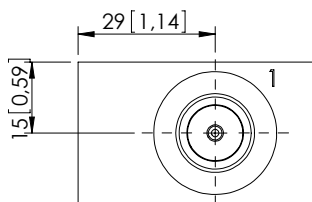
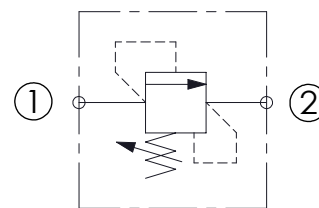


RELIEF VALVE IN BODY

KPLN-010-DPNA

DIRECT ACTING
HARDENED SEAT

Dimensions: mm [inches]



SPECIFICATIONS

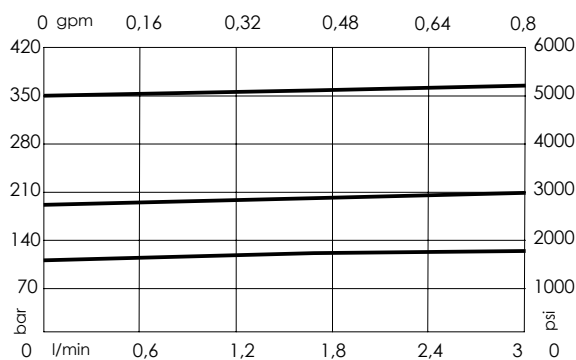
Max. operating pressure:	350 bar (5000 psi)
Rated flow:	3 l/min (0,8 gpm)
Manifold:	Aluminium
Weight:	0,25 kg (0,55 lbs)
Contamination class to ISO 4406:	See technical spec.
MTTFd:	150 years

NOTES

SEALING CAP

Ordering code:
AT000020

CURVES



ORDERING CODES

Quick code	Description	Main ports size	Standard setting Q=0,2 l/min (0,05 gpm)	Adjustment range	Pressure increase
KP000041	KPLN-010-DPNA-SN-G38-N350	P,T : G 3/8"	350 bar (5000 psi)	140-350 bar (2000-5000 psi)	142 bar/turn (2100 psi/turn)
KP000042	KPLN-010-DPNA-SN-G38-N200	P,T : G 3/8"	200 bar (2900 psi)	90-210 bar (1300-3000 psi)	87 bar/turn (1300 psi/turn)
KP000043	KPLN-010-DPNA-SN-G38-N100	P,T : G 3/8"	100 bar (1400 psi)	35-110 bar (500-1600 psi)	47 bar/turn (700 psi/turn)
KP000044	KPLN-010-DPNA-SN-G14-N350	P,T : G 1/4"	350 bar (5000 psi)	140-350 bar (2000-5000 psi)	142 bar/turn (2100 psi/turn)
KP000045	KPLN-010-DPNA-SN-G14-N200	P,T : G 1/4"	200 bar (2900 psi)	90-210 bar (1300-3000 psi)	87 bar/turn (1300 psi/turn)
KP000046	KPLN-010-DPNA-SN-G14-N100	P,T : G 1/4"	100 bar (1400 psi)	35-110 bar (500-1600 psi)	47 bar/turn (700 psi/turn)