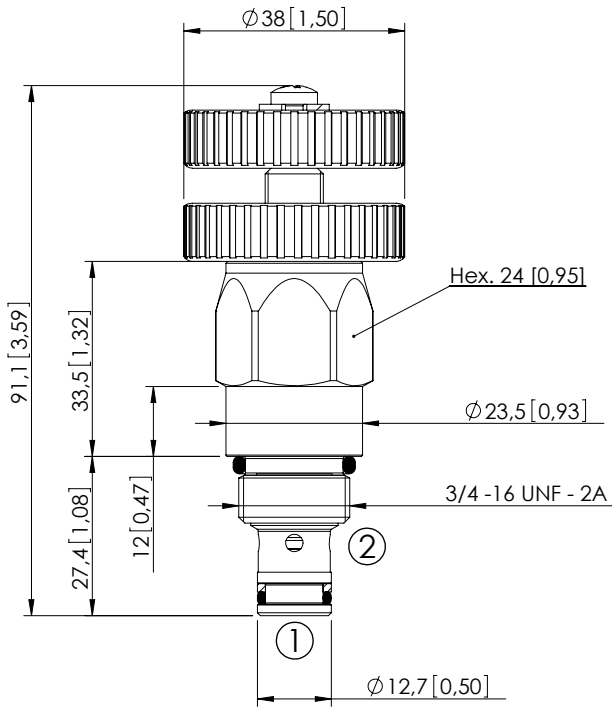


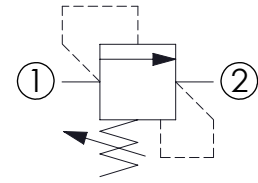
RELIEF VALVE

CPLN-010-DHNA

DIRECT ACTING
HARDENED SEAT



Dimensions: mm [inches]

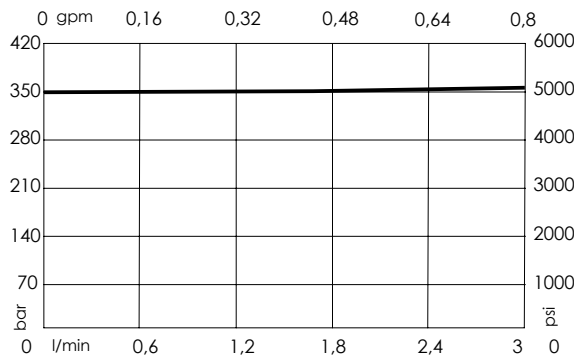


SPECIFICATIONS

Max. operating pressure:	350 bar (5000 psi)
Rated flow:	3 l/min (0,8 gpm)
Cavity:	SAE-08-2N
Weight:	0,18 kg (0,4 lbs)
Contamination class to ISO 4406:	See technical spec.
Seal kit:	RA700081
Installation torque:	45 - 50 Nm (33 - 37 ft-lb)
MTF _d :	150 years

NOTES

CURVES



ORDERING CODES

Quick code	Description	Standard setting Q=0,2 l/min (0,05 gpm)	Adjustment range	Pressure increase
CP000172	CPLN-010-DHNA-VN-S08-N350	350 bar (5000 psi)	20-350 bar (300-5000 psi)	83 bar/turn (1200 psi/turn)