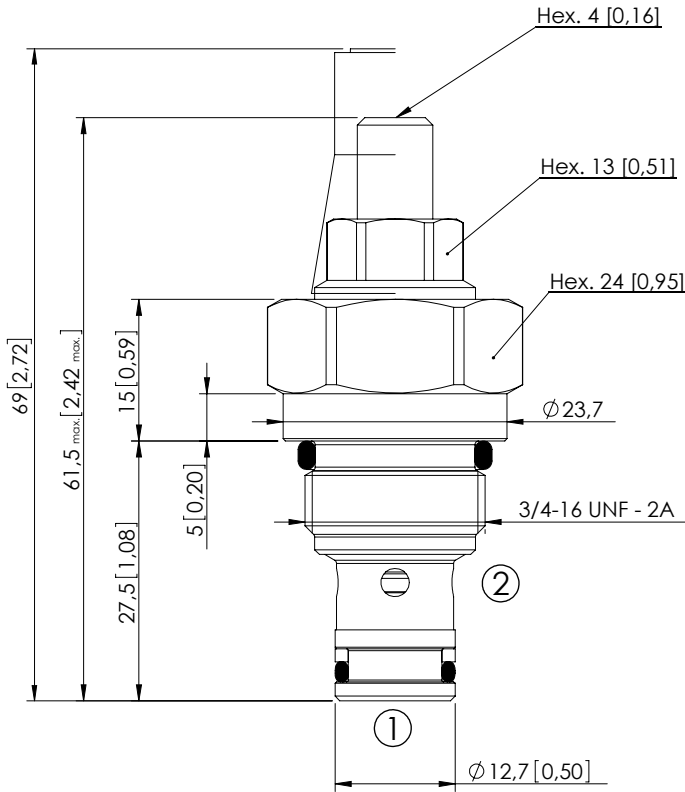


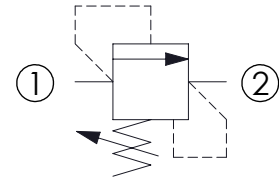
RELIEF VALVE

CPLN-010-DHNA

DIRECT ACTING
HARDENED SEAT



Dimensions: mm [inches]



SPECIFICATIONS

Max. operating pressure:	350 bar (5000 psi)
Rated flow:	3 l/min (0,8 gpm)
Cavity:	SAE-08-2N
Weight:	0,1 kg (0,22 lbs)
Contamination class to ISO 4406:	See technical spec.
Seal kit:	RA700081
Installation torque:	45 - 50 Nm (33 - 37 ft-lb)
MTTF _d :	150 years

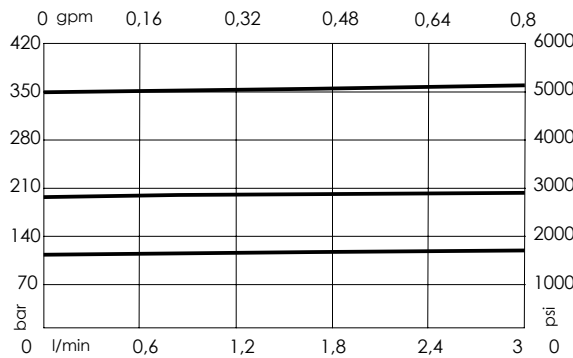
NOTES

SEALING CAP



Ordering code:
AT000020

CURVES



ORDERING CODES

Quick code	Description	Standard setting Q=0,2 l/min (0,05 gpm)	Adjustment range	Pressure increase
CP000006	CPLN-010-DHNA-SN-S08-N350	350 bar (5000 psi)	140-350 bar (2000-5000 psi)	142 bar/turn (2000 psi/turn)
CP000055	CPLN-010-DHNA-SN-S08-N200	200 bar (2900 psi)	90-210 bar (1300-3000 psi)	87 bar/turn (1300 psi/turn)
CP000056	CPLN-010-DHNA-SN-S08-N100	100 bar (1400 psi)	35-110 bar (500-1550 psi)	47 bar/turn (700 psi/turn)